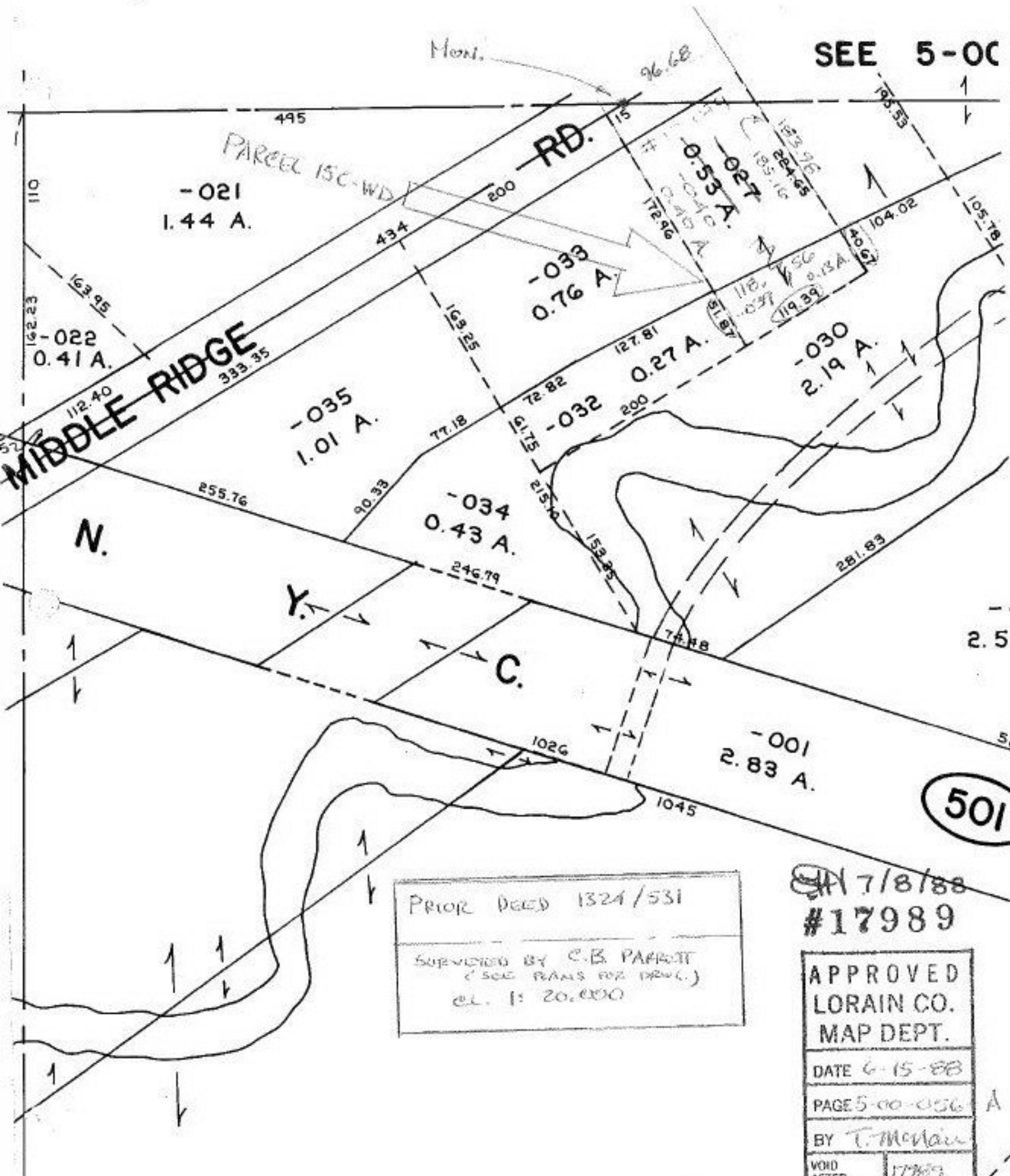


SEE 5-00



-021
1.44 A.

-022
0.41 A.

-033
0.76 A.

-035
1.01 A.

-034
0.43 A.

-032
0.27 A.

-030
2.19 A.

-001
2.83 A.

501

Prior Deed 1324/531

Supervised by C.B. PARROTT
(SEE PLANS FOR DEED.)
CL. 1: 20,000

7/8/88
#17989

APPROVED
LORAIN CO.
MAP DEPT.

DATE 6-15-88

PAGE 5-00-056 A

BY T. McManis

VOID AFTER 177889

-012