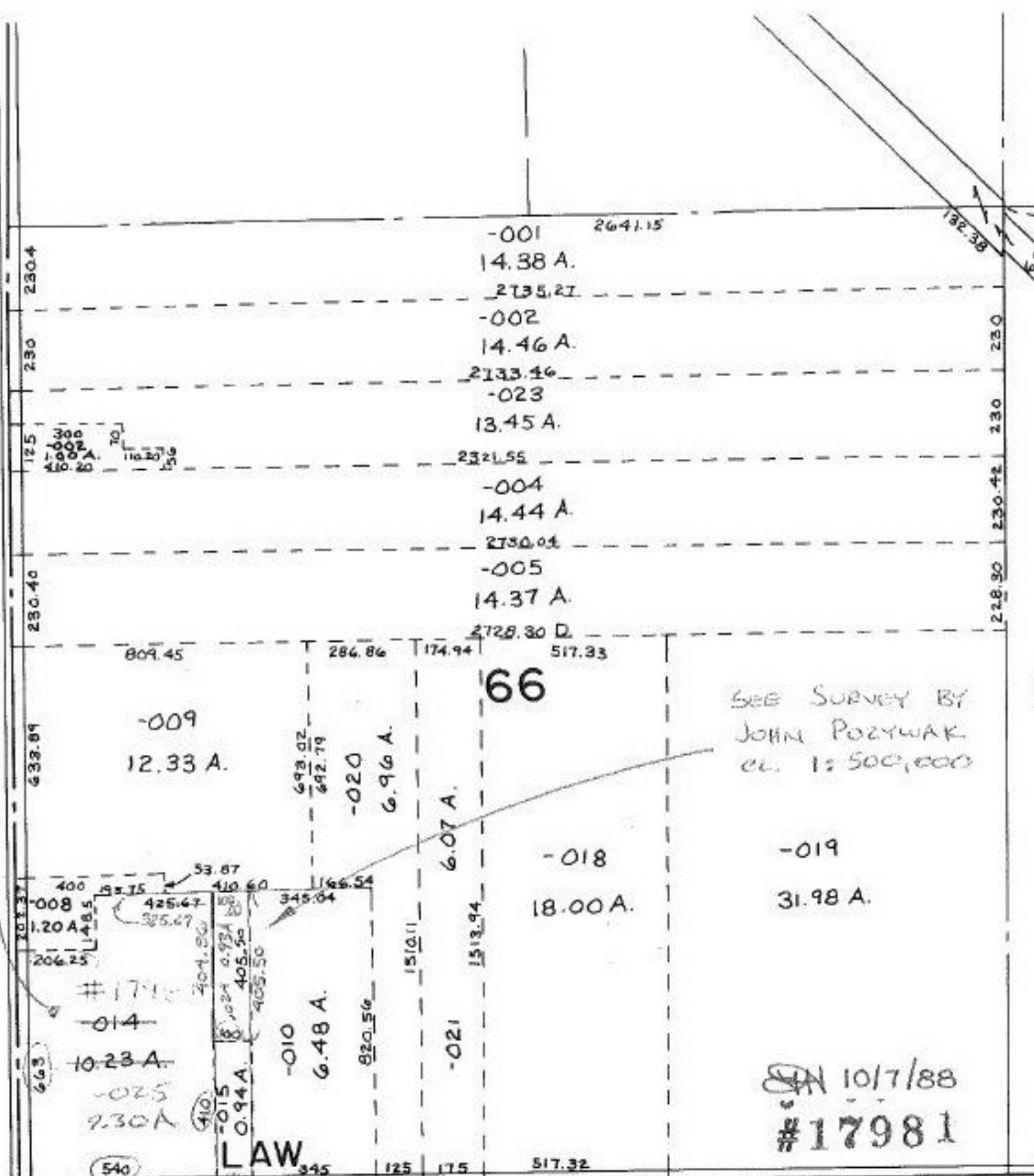


Prior Deed CR 37/509 1158/577



SEE SURVEY BY JOHN POZYWAK CL. 1:500,000

10/17/88  
#17981

10.23  
0.93  
9.30

APPROVED	
LORAIN CO.	
MAP DEPT.	
DATE 6-10-88	
PAGE 16-6	
BY J. McMain	
VOID AFTER	17981

-011  
57.91 A.