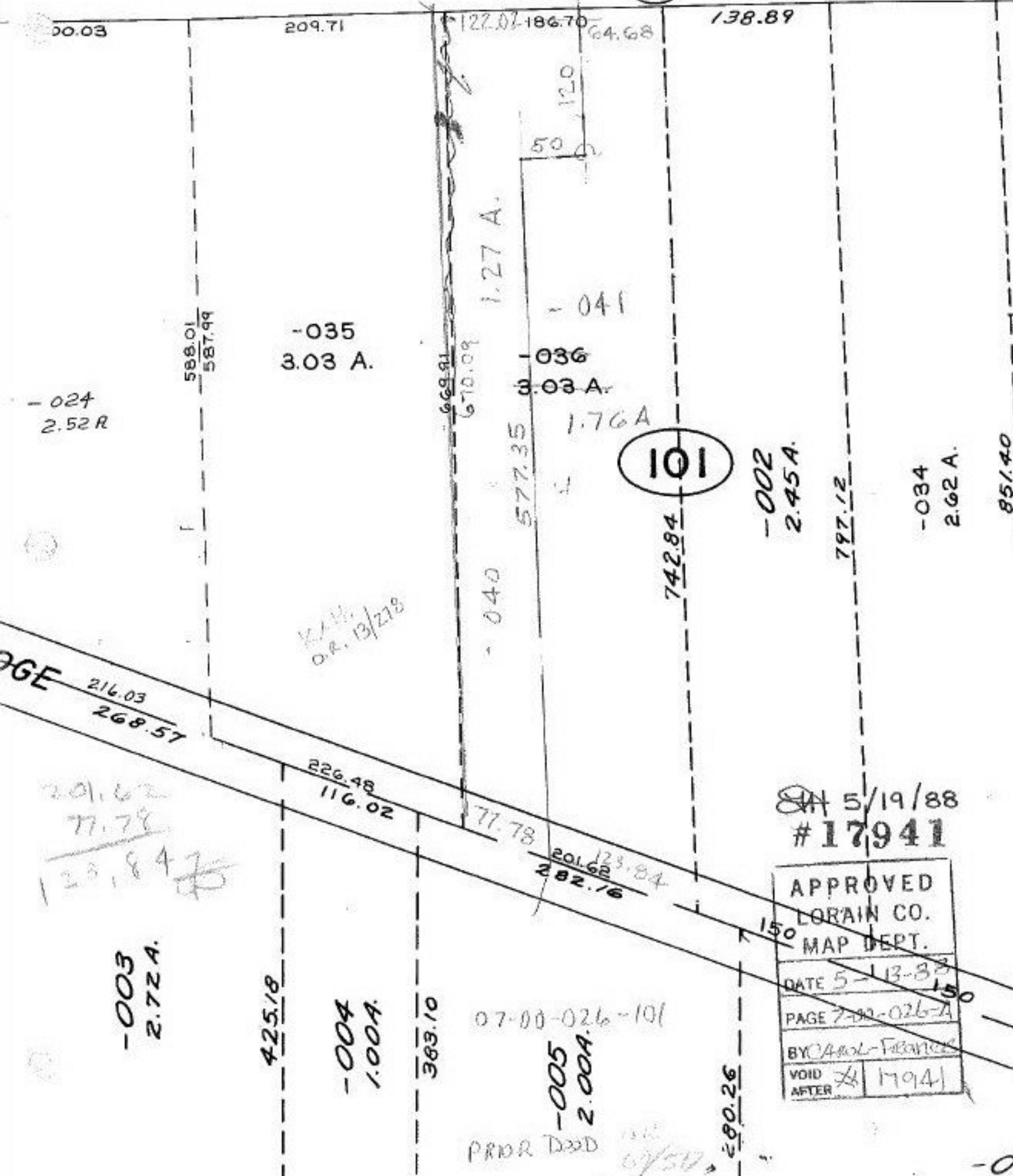


SEE 7-00-027-C

500

Pt. 07-00-034-50



K.A.H.  
D.R. 13/218

101

SA 5/19/88  
#17941

APPROVED	
LORAIN CO.	
MAP DEPT.	
DATE	5-13-88
PAGE	7-00-026-A
BY	CAROL FEARNER
VOID AFTER	17941

07-00-026-101  
-005  
2.00A.  
PRIOR D32D  
6/50

201.62  
77.78  
123.84

-001  
2.22