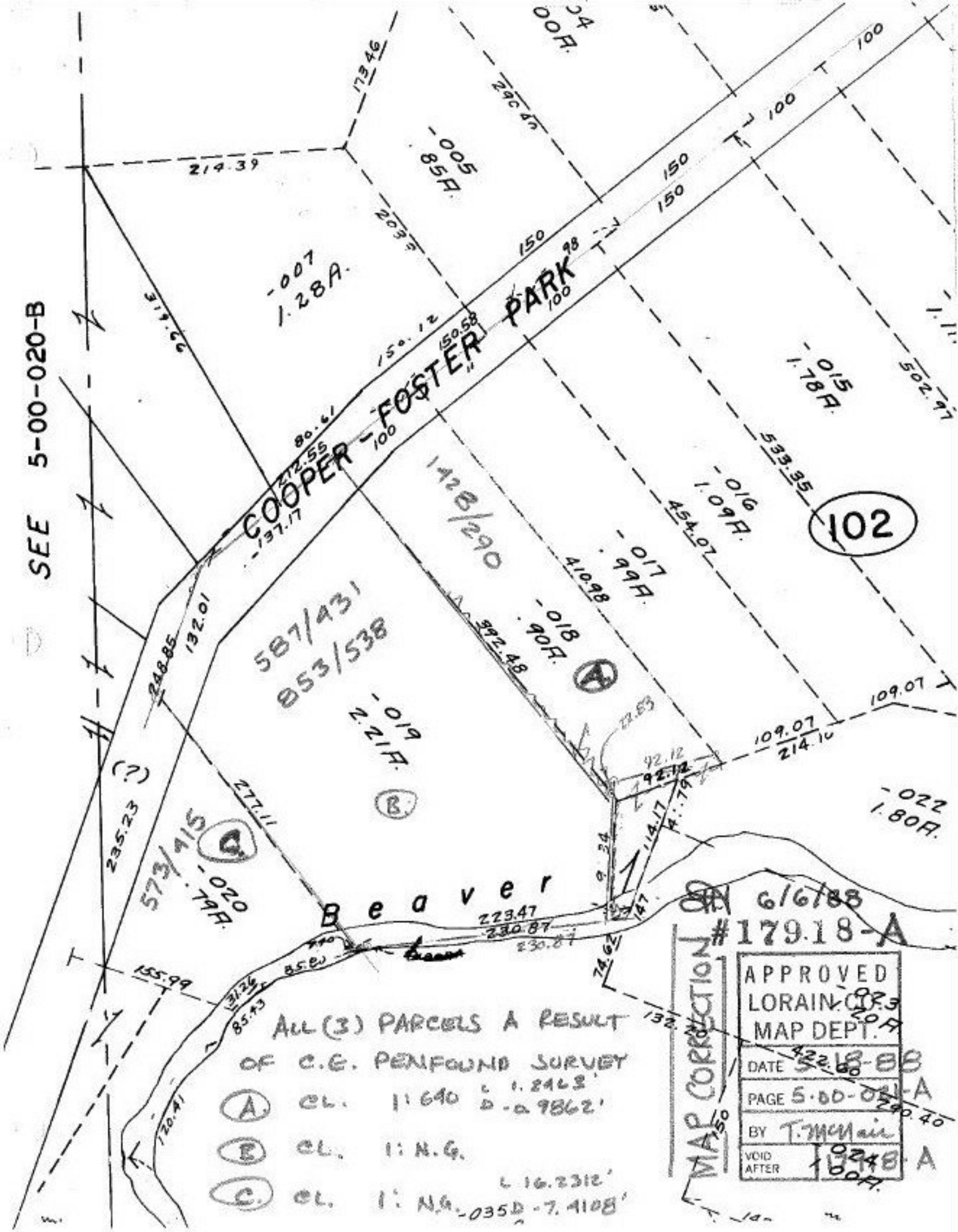


SEE 5-00-020-B



ALL (3) PARCELS A RESULT
 OF C.E. PENFOUND SURVEY

(A)	CL.	11.640	1.2463'
(B)	CL.	11. N.G.	0.9862'
(C)	CL.	11. N.G.	16.2312'

10350 - 7.4108'

MAP CORRECTION # 179.18-A

APPROVED
 LORAIN C. [initials]
 MAP DEPT.

DATE 5-22-88

PAGE 5-00-020-A

BY T. McNeil

VOID AFTER 10/24/88