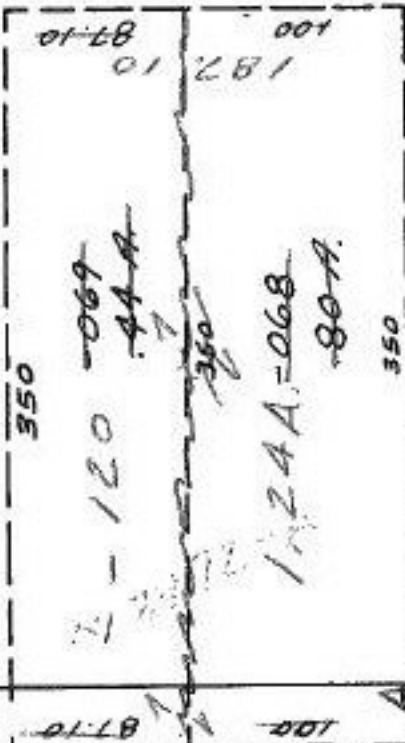


Pt. - 014
Pt. 24.00R.

F
P

Pt. - 018
Pt. 9.00R.

-016
1.51R.



COMBINATION

04-00-025-000 -

360

183

187.10
100
187.10

200.90
A

SEE 4-00-024-D

SA 4/18/88
17892A

APPROVED	
LORAIN CO.	
MAP DEPT.	
DATE 4-6-88	
PAGE 4-02-025	
BY CAROL FRANCIS	
VOID AFTER	17892A