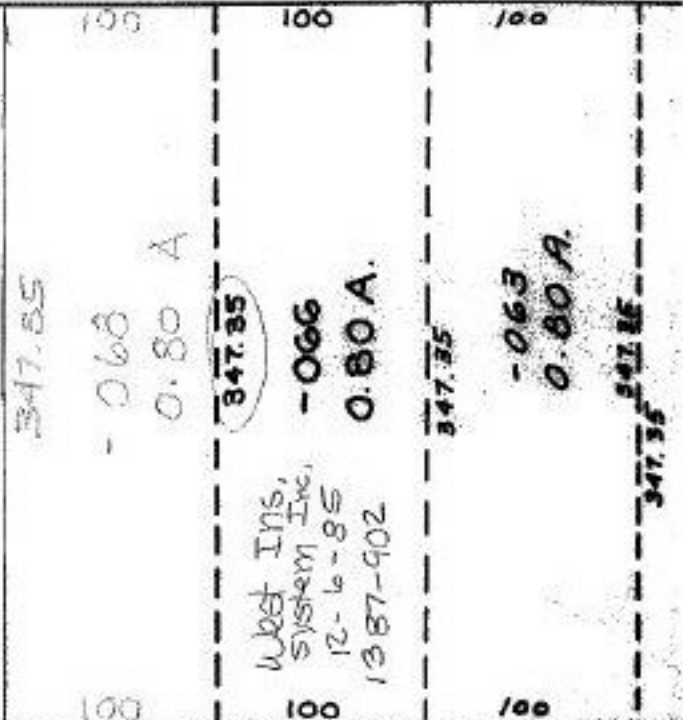
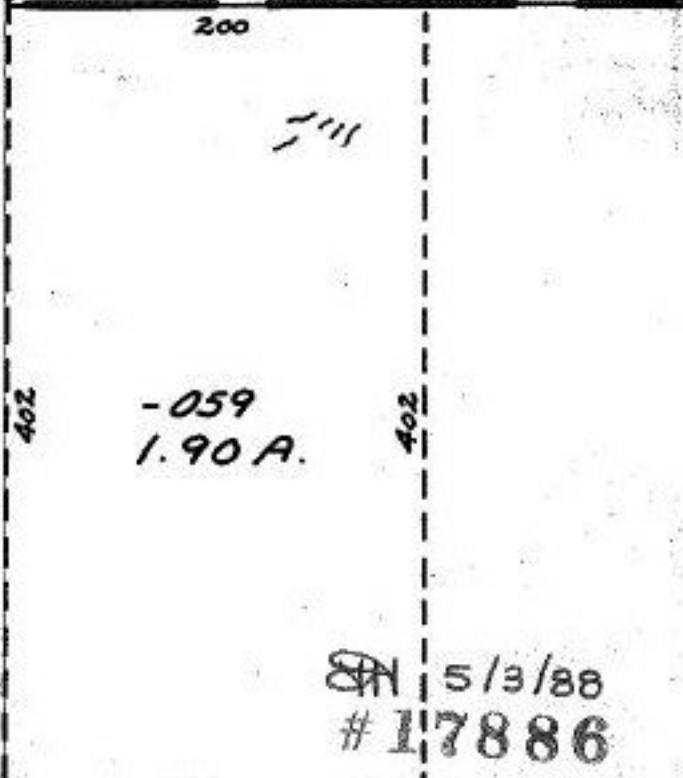


1513.66
1413.69



- 069
Pt. - 067
Pt. 25.80 A.
25.00 A
17886

60
COMMERCE
60



200
CORP LINE
2177.83 LORAIN COUNTY COMM. RES. 75-377 4-19-75 VILLAGE DE LAGRANGE APPROVED
253 253

15-00-065-000
PRIOR Deed 1017-
-233
Survey By:

| | |
|-------------------|--------------|
| APPROVED | |
| LORAIN CO. | |
| MAP DEPT. | |
| DATE | 3-30-88 |
| PAGE | 15-00-065-13 |
| BY Carol-Francois | |
| VOID AFTER | # 17886 |