

SEE 13.

T

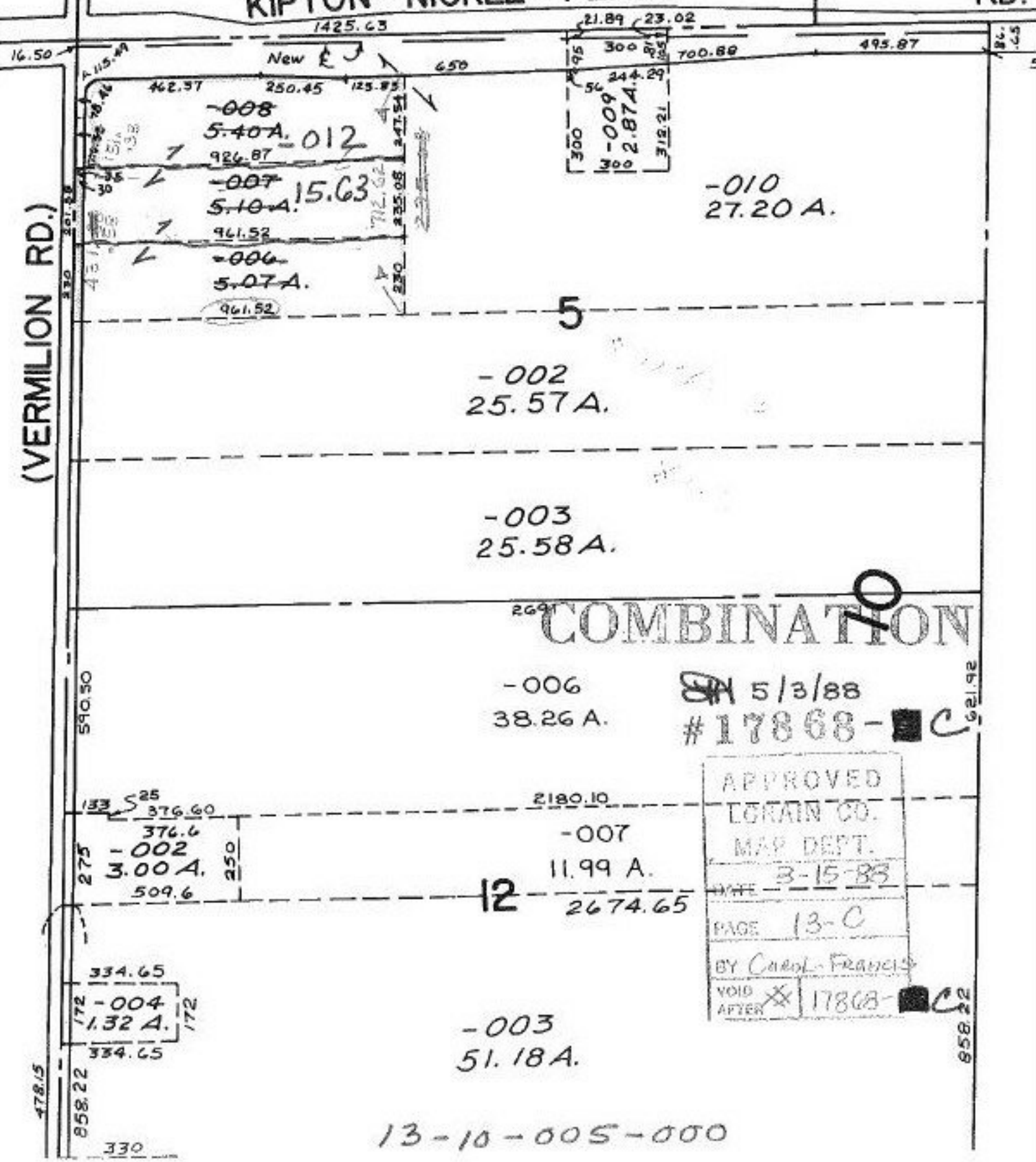
SF

KIPTON - NICKLE - PLATE

RD.

20

(VERMILION RD.)



-008
5.40 A.
926.87

-007
5.10 A.
961.52

-006
5.07 A.
961.52

-002
25.57 A.

-003
25.58 A.

-006
38.26 A.

COMBINATION

-007
11.99 A.

12
2674.65

-003
51.18 A.

-010
27.20 A.

5/3/88
#17868-C

APPROVED
 LORAIN CO.
 MAP DEPT.
 DATE 3-15-83
 PAGE 13-C
 BY Carol Francis
 VOID AFTER 17868-C

13-10-005-000