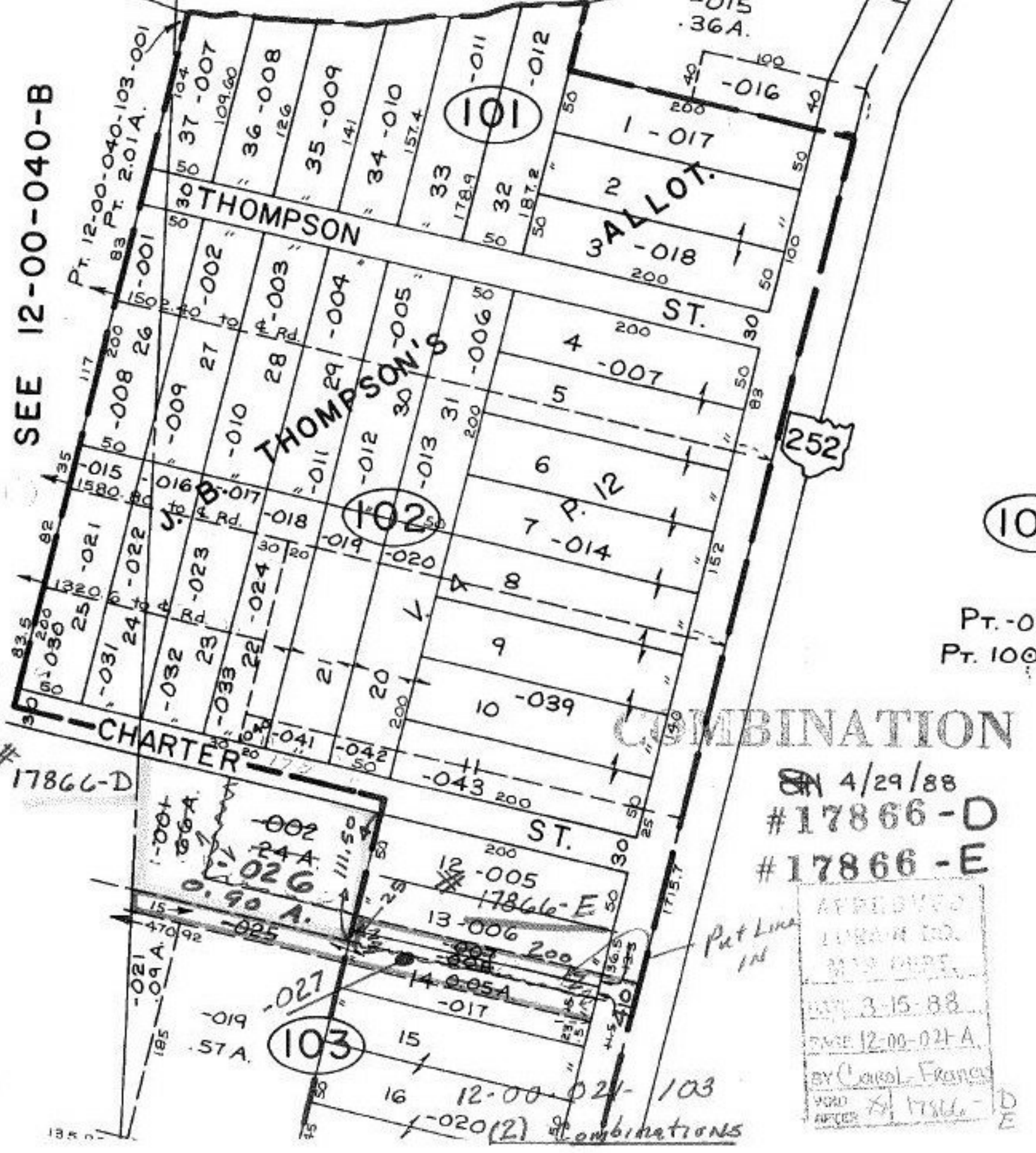


SEE 12-00-040-B

Rocky



Pt. 12-00-040-103-001
83 Pt. 2.01A.
156-001

THOMPSON

THOMPSON'S

3 ALLOT.

ST.

CHARTER

ST.

252

COMBINATION

SA 4/29/88
#17866-D
#17866-E

APPROVED
LAWYER
MRS. [Name]
DATE 3-15-88
CASE 12-00-021-A
BY Carol Francis
WORD OFFICER [Signature] 17866-D
E

12-00-021-103
1-020(2) combinations

105

Pt. -02
Pt. 100