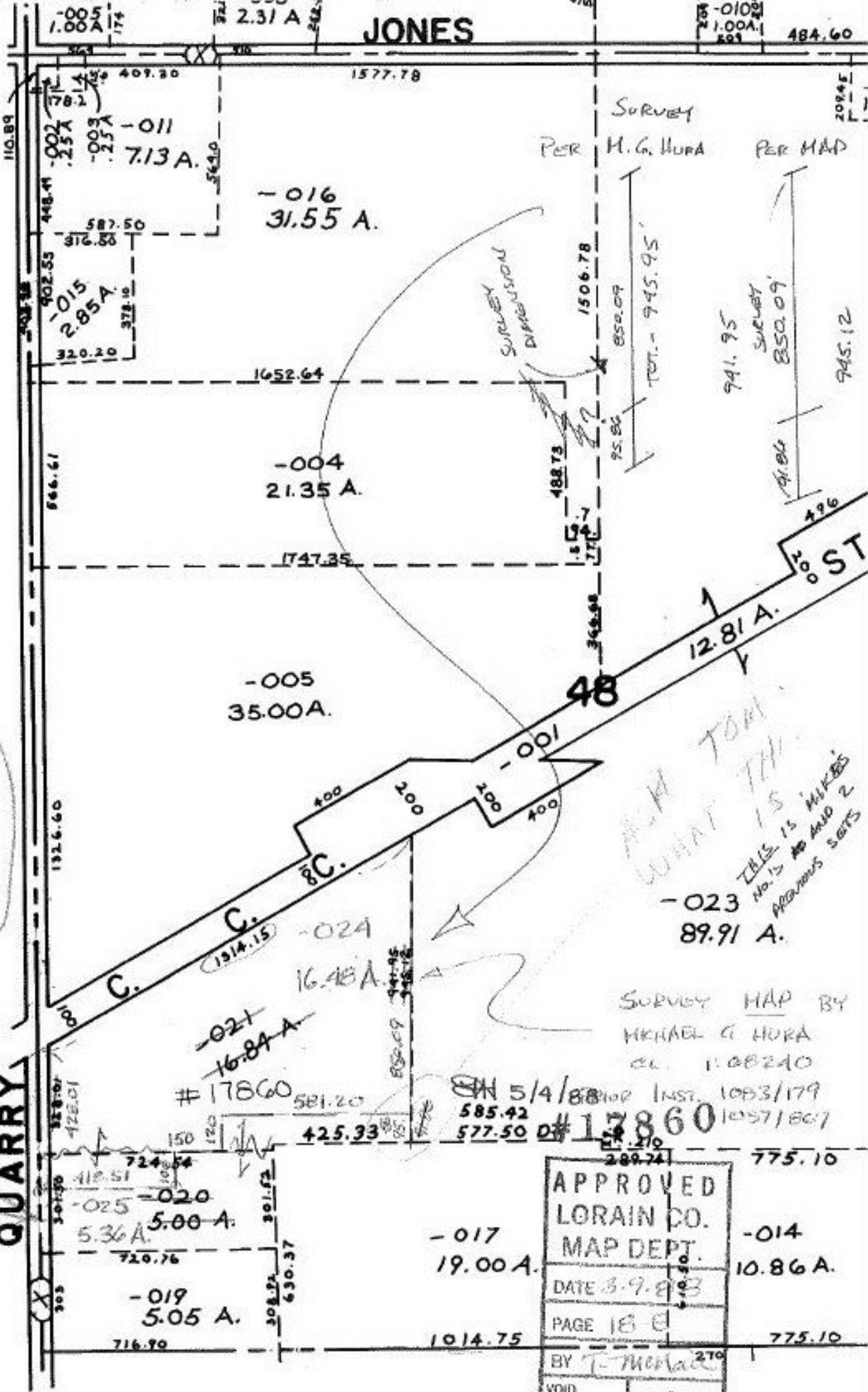


JONES

484.60



3251.01  
 301.50  
 629.51  
 428.01  
 201.50

QUARRY

SURVEY PER H. G. HURA PER MAP

SURVEY DISPOSITION

TOT. - 945.95'

941.95 SURVEY 850.09 945.12

NEW TOWN  
 WHAT THE  
 THIS IS MILES  
 No. 15 No. 15  
 PREVIOUS SETS

SURVEY MAP BY  
 MICHAEL G. HURA  
 C.E. 1108240

ON 5/4/88  
 585.42  
 577.50  
 #17860

APPROVED	
LORAIN CO.	
MAP DEPT.	
DATE 3-9-83	
PAGE 18 E	
BY T-Merick	
VOID AFTER	17860

-014 10.86 A.

-017 19.00 A.

1014.75

775.10

-016 31.55 A.

-004 21.35 A.

-005 35.00 A.

-024 16.48 A.

-021 16.84 A.

-025 5.36 A.

-019 5.05 A.

1652.64

1747.35

48

12.81 A.

2.31 A

7.13 A.

2.85 A.

C. 8C.

1914.15

#17860

#17860

110.89

1926.60

428.01

418.51

720.76

716.90

1.005

174

409.30

448.41

587.50

902.55

320.20

378.10

566.61

848.73

95.86

1506.78

850.09

488.73

778.7

348.98

496

196

1926.60

1926.60

1926.60

1926.60

1926.60

1926.60

1926.60

1926.60

1926.60

1926.60

1926.60

1926.60

1926.60

1926.60

1926.60

1926.60

1926.60

1926.60

1926.60

1926.60

1926.60

1926.60

1926.60

1926.60

1926.60

1926.60

1926.60

1926.60

1926.60

1926.60

1926.60

1.005

174

409.30

448.41

587.50

902.55

320.20

378.10

566.61

848.73

95.86

1506.78

850.09

488.73

778.7

348.98

496

196

1926.60

1926.60

1926.60

1926.60

1926.60

1926.60

1926.60

1926.60

1926.60

1926.60

1926.60

1926.60

1926.60

1926.60

1926.60

1926.60

1926.60

1926.60

1926.60

1926.60

1926.60

1926.60

1926.60

1926.60

1926.60

1926.60

1926.60

1926.60

1926.60

1926.60

1926.60

2.31 A

7.13 A.

409.30

448.41

587.50

902.55

320.20

378.10

566.61

848.73

95.86

1506.78

850.09

488.73

778.7

348.98

496

196

1926.60

1926.60

1926.60

1926.60

1926.60

1926.60

1926.60

1926.60

1926.60

1926.60

1926.60

1926.60

1926.60

1926.60

1926.60

1926.60

1926.60

1926.60

1926.60

1926.60

1926.60

1926.60

1926.60

1926.60

1926.60

1926.60

1926.60

1926.60

1926.60

1926.60

1926.60

1.005

174

409.30

448.41

587.50

902.55

320.20

378.10

566.61

848.73

95.86

1506.78

850.09

488.73

778.7

348.98

496

196

1926.60

1926.60

1926.60

1926.60

1926.60

1926.60

1926.60

1926.60

1926.60

1926.60

1926.60

1926.60

1926.60

1926.60

1926.60

1926.60

1926.60

1926.60

1926.60

1926.60

1926.60

1926.60

1926.60

1926.60

1926.60

1926.60

1926.60

1926.60

1926.60

1926.60

1926.60

2.31 A

7.13 A.

409.30

448.41

587.50

902.55

320.20

378.10

566.61

848.73

95.86

1506.78

850.09

488.73

778.7

348.98

496

196

1926.60

1926.60

1926.60

1926.60

1926.60

1926.60

1926.60

1926.60

1926.60

1926.60

1926.60

1926.60

1926.60

1926.60

1926.60

1926.60

1926.60

1926.60

1926.60

1926.60

1926.60

1926.60

1926.60

1926.60

1926.60

1926.60

1926.60

1926.60