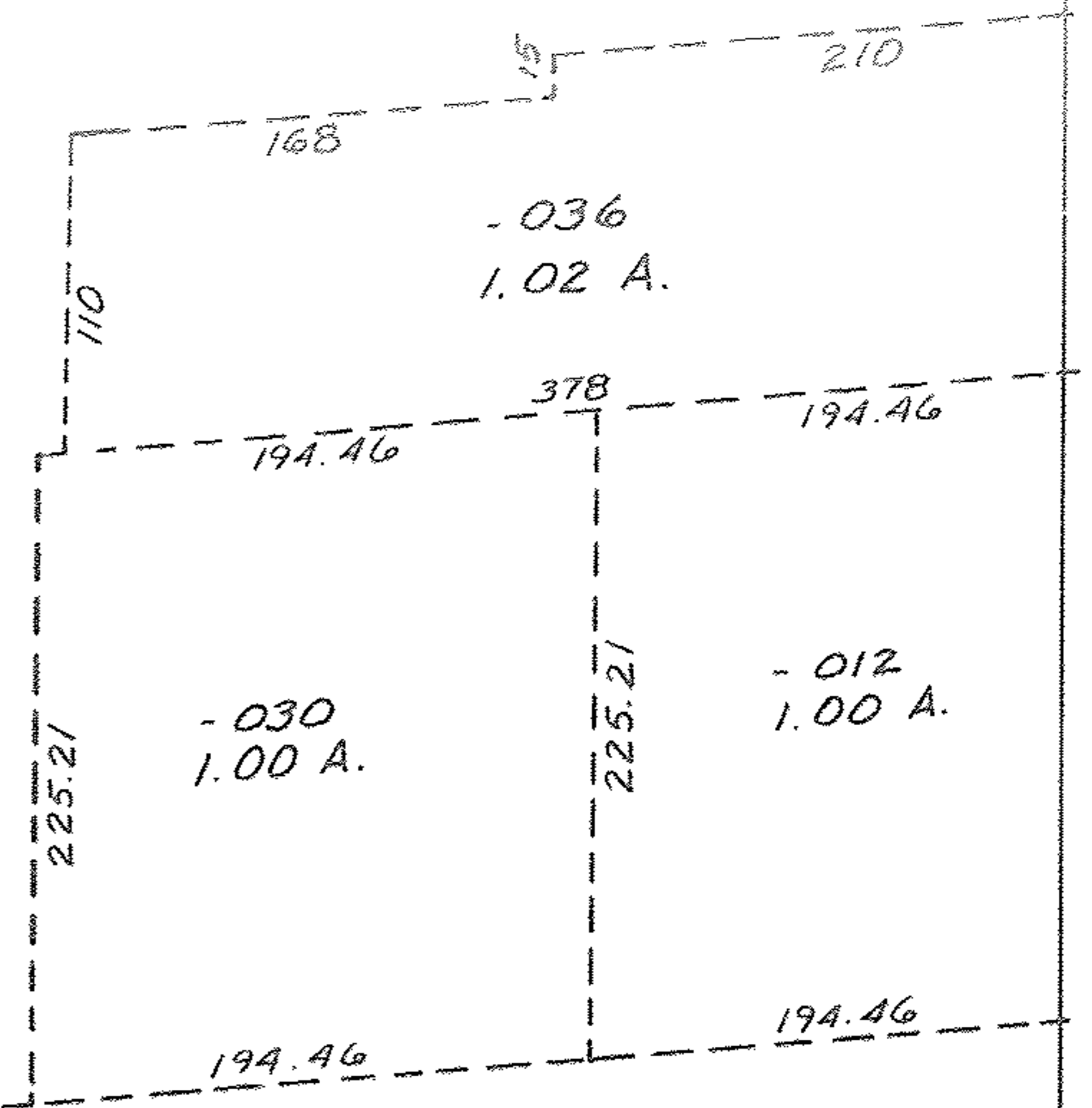


C.C.C. & ST. L.

- 037  
14.07 A.
- ① 1.34 A.
- ② 0.13 A.
- ③ 0.16 A.
- 1.63 A.



1551

-027  
1.20 A.

689

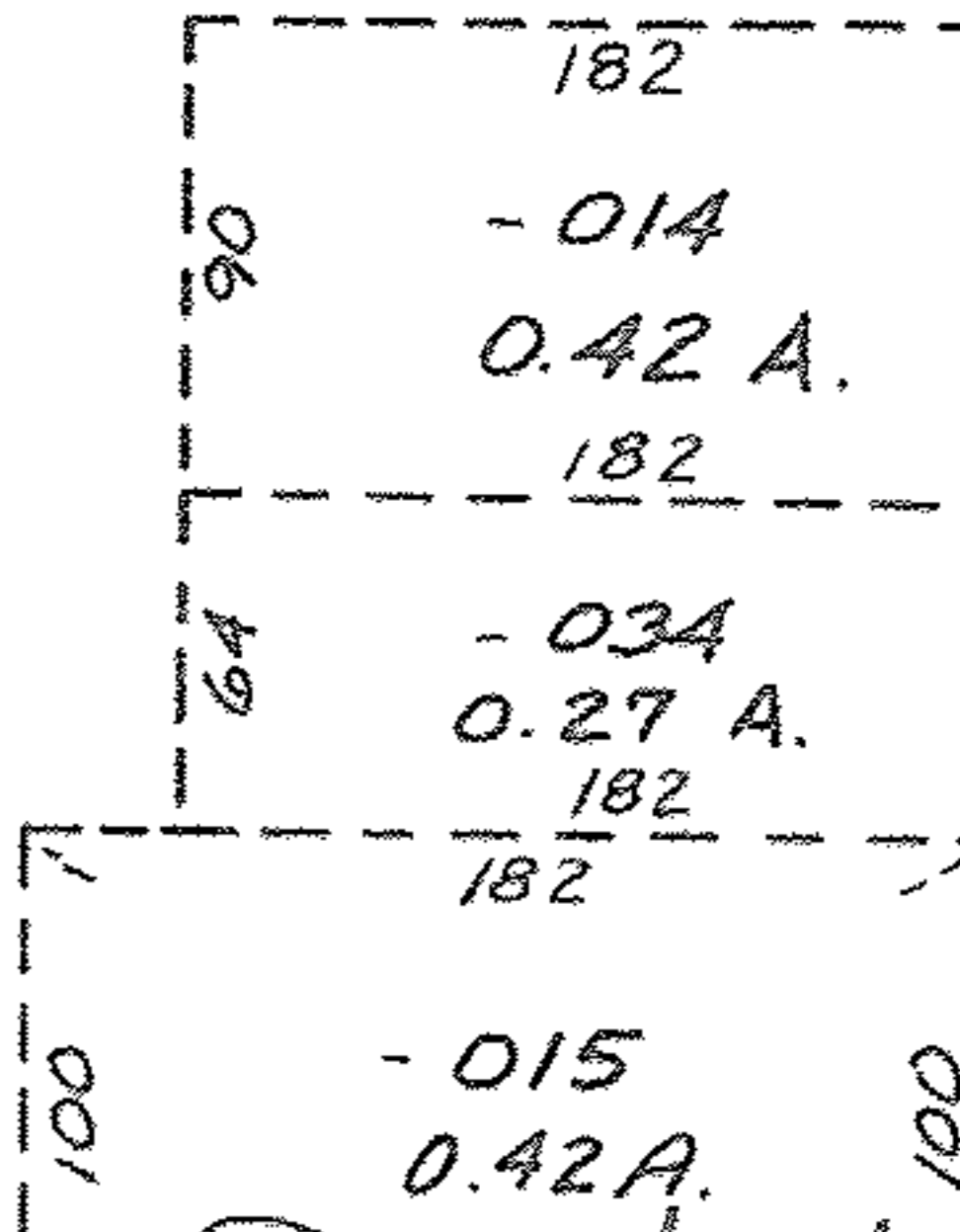
-040  
~~5.89 A.~~ PER CALC.  
1.63 A. MAP DEPT.

Ac. CORR.  
SEE KSA SURVEY MAP

Pt. -038  
Pt. 3.23 A.

-035  
4.73 A.

-039  
1.50 A.



3/29/88

387.89

688.28  
684

#17856

SEE K.S.A. SURVEY

SEE 12-00-063-B

MAP CORR.

APPROVED LORAIN CO. MAP DEPT.	
DATE	3.1.88
PAGE	12-00-062 B
BY	T. McMan
VOID AFTER	17856-A