

-011
11.75A

735.74

LORAIN

576.78

154.78

324.50
384.57

101

-005
Blk. A

160

-007

112.60

ELYRIA

SCALE: 1" = 100'

PH-009
PH-004
PH-50R
105.10
295.10
160
150
170-008
176.84
176.84
176.84

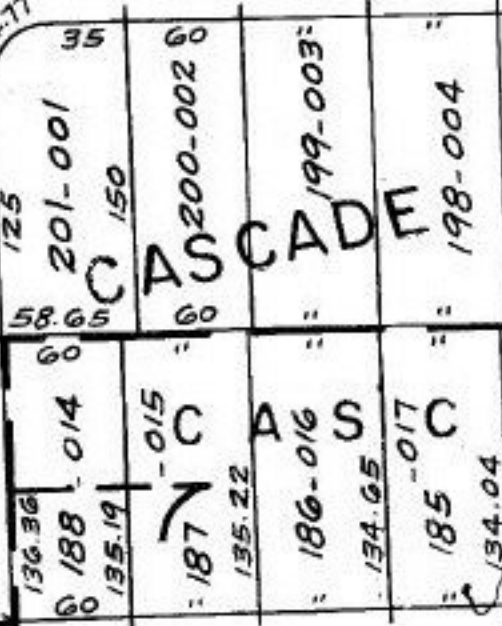
-006

KEYS

N. 2°17' W. 210

351.91

R-24.77



104

237.005

236-006

235-007

234-008

233-009

203-002

202-003

201-001

200-002

199-003

198-004

527.94

117.88

58.43

125

60

60

60

60

60

60

60

415.06 N. 2

59.45

59.45

59.45

59.45

59.45

59.45

59.45

59.45

59.45

59.45

59.45

59.45

59.45

59.45

DR. 6

COLONY

HOLLIS

60

60

60

60

60

60

60

60

60

60

240

100

241-002

125

243-

14

204-001

65

74

38

55

60

35

60

60

60

60

60

60

60

60

60

60

60

60

60

60

60

60

60

60

MAP CORRECTIONS

BELL
ON 5/19/88
#17847-A

APPROVED
LORAIN CO.
MAP DEPT.
DATE 5-5-88
PAGE
BY T. McMain
VOID AFTER 17847-A

6-6A