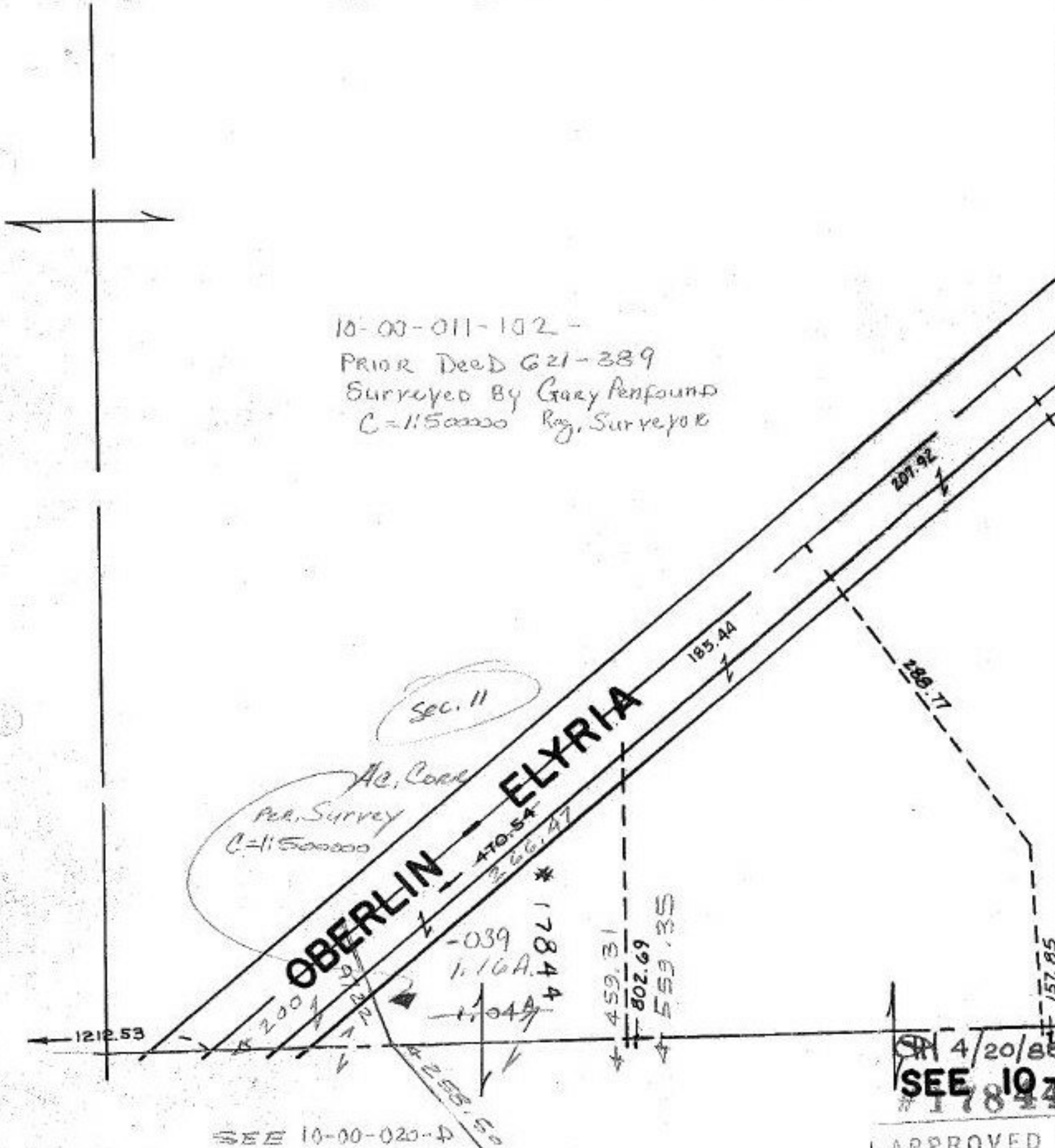


10-00-011-102 -

PRIOR Deed 621-389

Surveyed By Gary Penfound
C=11500000 Reg. Surveyor



SEE 10-00-020-4

4/20/88
SEE 107
#17844

APPROVED
LORAIN CO.
MAP DEPT.
DATE 2-10-88
FILE 10-00-011-102
BY Carol Fenners
YOUR OFFICE
17844