

-006
1.85A.

306.70

-018
4.36A.

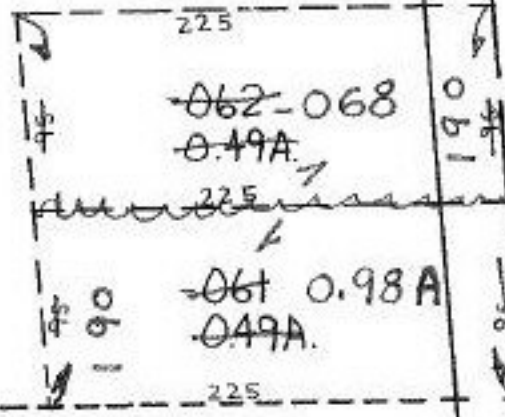
271.0

587.20

COMBINATION

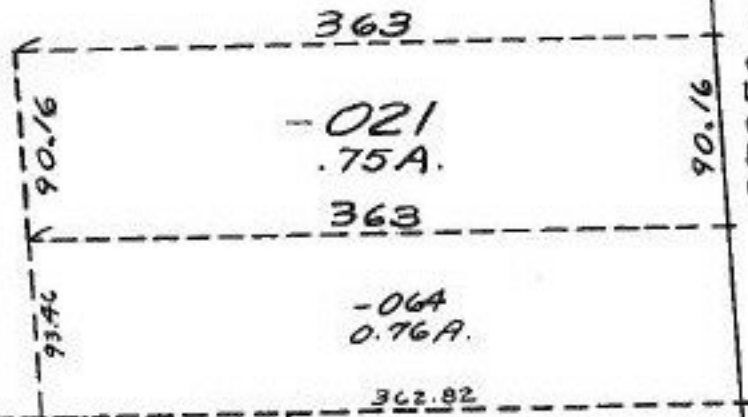
0.49
0.49

0.98



8.40

09



50

04-00-015-109-

-023
72A
ON 1/14788
#17775-A

APPROVED	
LORAIN CO.	
MAP DEPT.	
DATE	12-14-87
PAGE	4-00-015-F
BY	CAROL-FRANCIS
VOID AFTER	17775-A

00 015-G