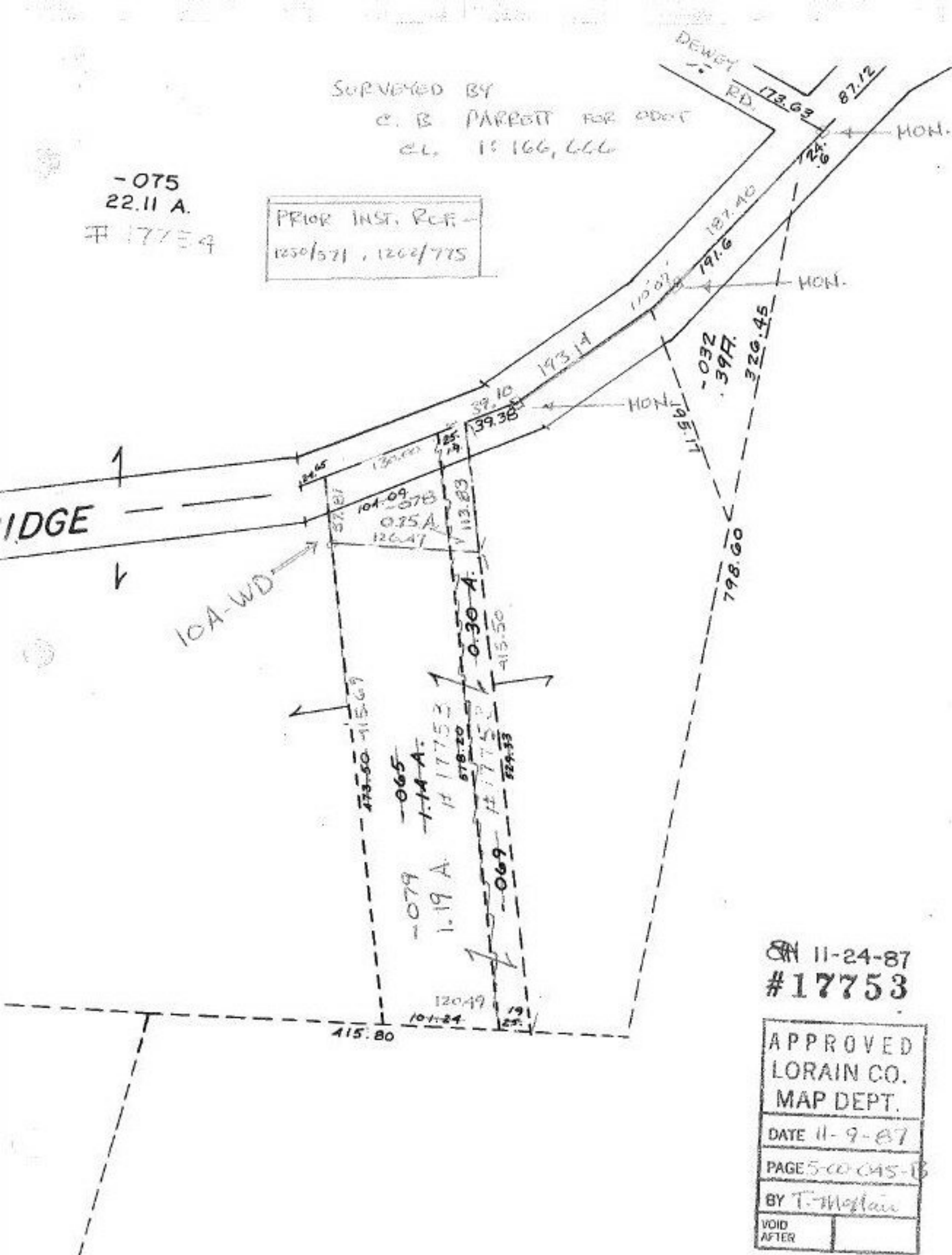


SURVEYED BY
 C. B. PARROTT FOR ODOT
 C.L. 15 166, 666

-075
 22.11 A.

17753

PRIOR INST. REF.
 1250/571, 1262/775



ON 11-24-87
 #17753

APPROVED	
LORAIN CO.	
MAP DEPT.	
DATE 11-9-87	
PAGE 5-00-045-13	
BY T. Moplain	
VOID	
AFTER	