

*[Handwritten signature]*

-006  
1.38 A.

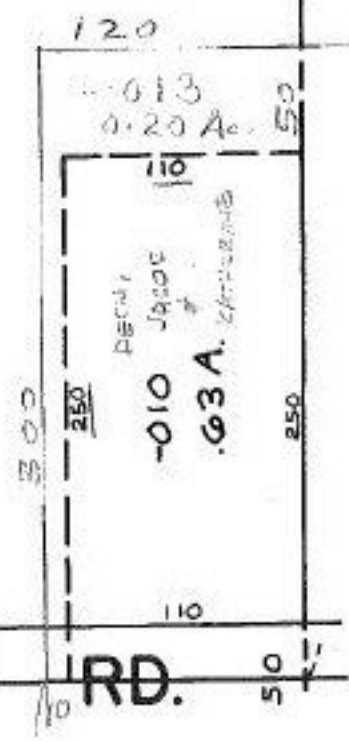
116

-008  
7.70 A.

-014  
-009  
5.37 A.  
5.17 A.

822.38  
1122-88

12-00-020-123  
Prior Deed 337-229  
Surveyed By,  
James B. Root & Assoc.  
K.S. and Assoc.  
C-11NF



SN 12/29/87  
#17746

APPROVED LORAIN CO. MAP DEPT.	
DATE 11-4-87	
PAGE 12-00-020-123	
BY C.E. FRANGS	
VOID AFTER	17746