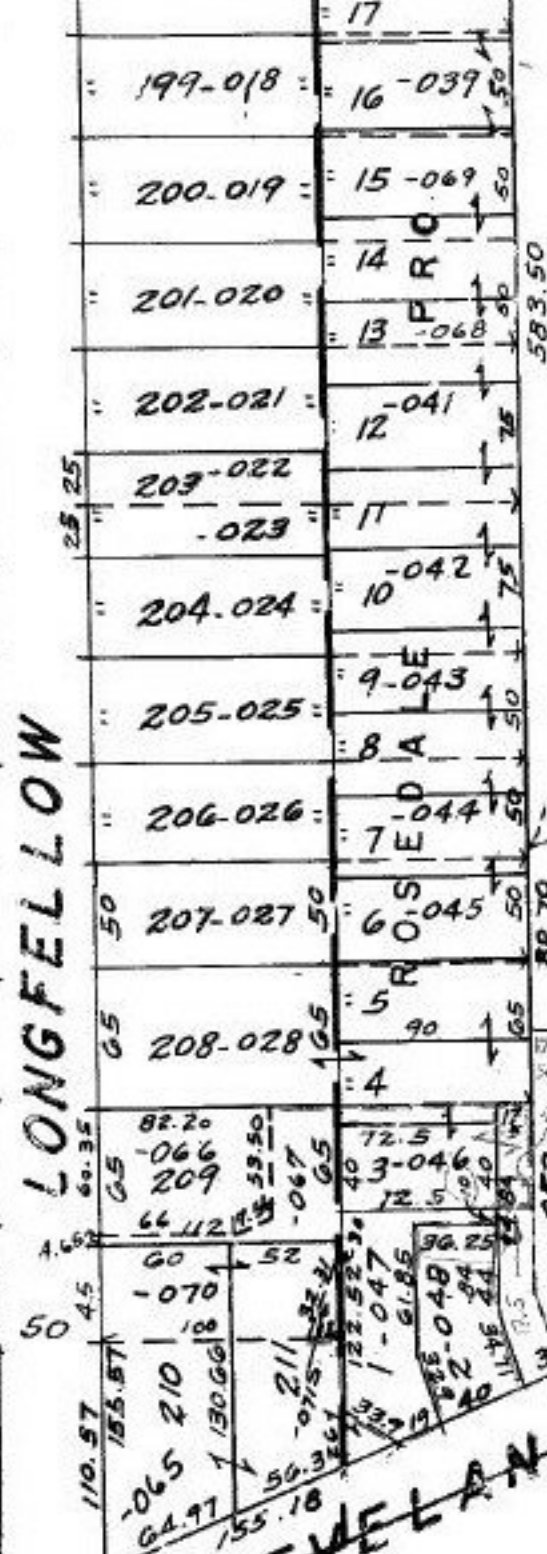
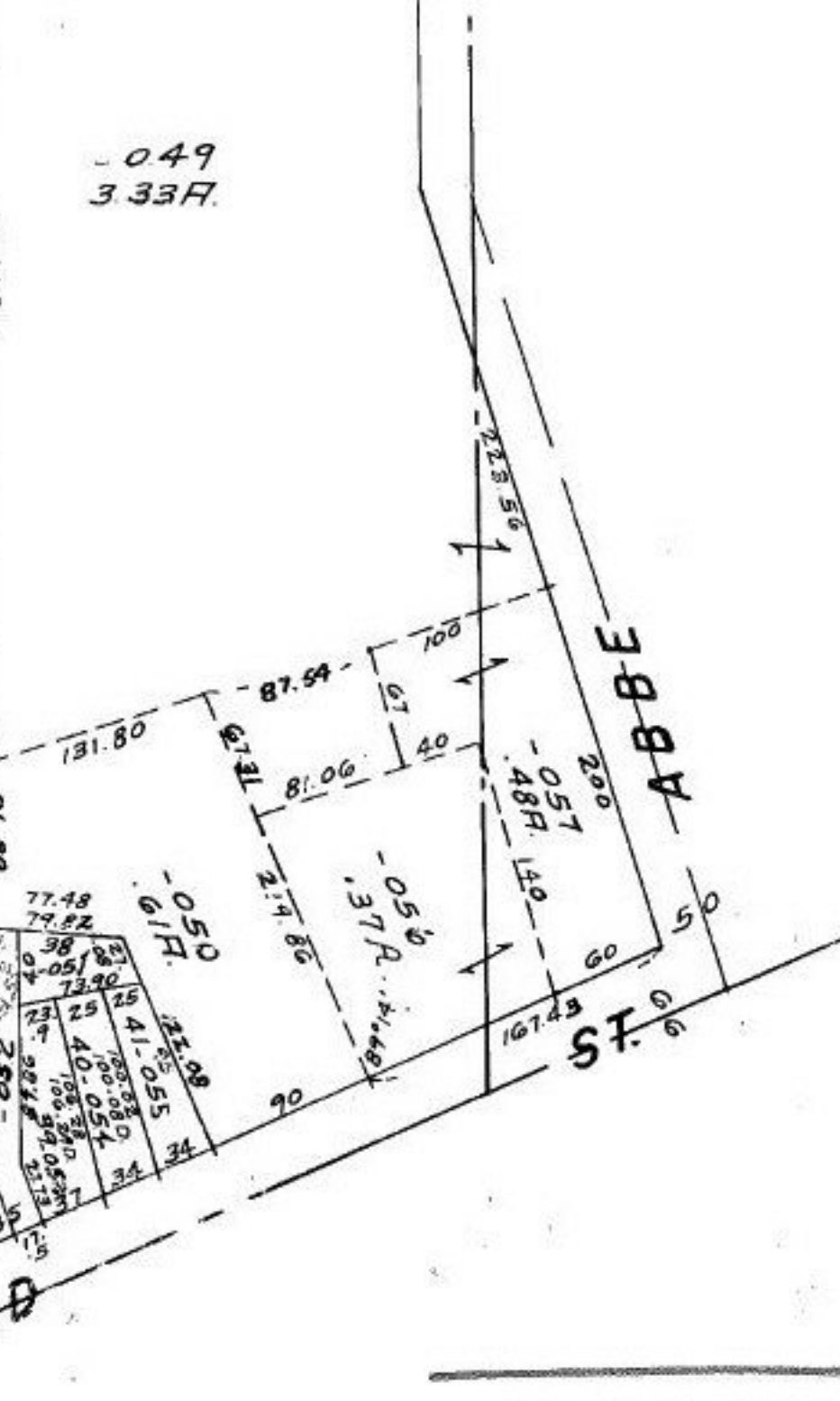


122-018 :  
 121-019 :  
 120-020 :  
 119-021 :  
 118-022 :  
 117-023 :  
 116-024 :  
 115-025 :  
 ST -026 50  
 113-027 60  
 2-028 :  
 111-029 60  
 112



- 049  
 3.337.



-106

LONGFELLOW

CLEVELAND

MAP CORRECTION

#17730-A  
 11-2-87

EAST OF RIVER  
 S 1/4 PT. LOTS 20, 21

APPROVED	
LORAIN CO.	
MAP DEPT.	
DATE	10/31/87
PAGE	6-88
BY	T. McMan
VOID AFTER	