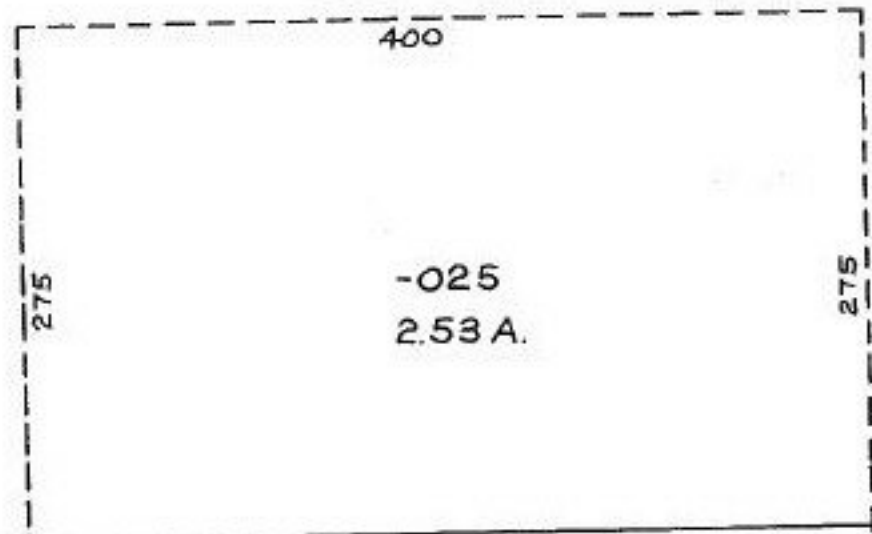


Pt. -028
Pt. 50.79 A.

Pt. -034
~~Pt. -032~~
~~Pt. 48.70 A.~~
47.56 A.



960
1590 7 1/2 ft
ROBSON
MEDINA - ELYRIA - ROBSON

400

10-00-015-116
Prior Deed 100-35
Surveyed by Arnold S. Koepf

116

Pt. -020
Pt. 16.86 A.

12-15-87
#17727

APPROVED
LORAIN CO.
MAP DEPT.
DATE 10-20-87
PAGE 10-00-015-116
BY CAROL FRANCIS
VOID AFTER *17727

284.15
76.50