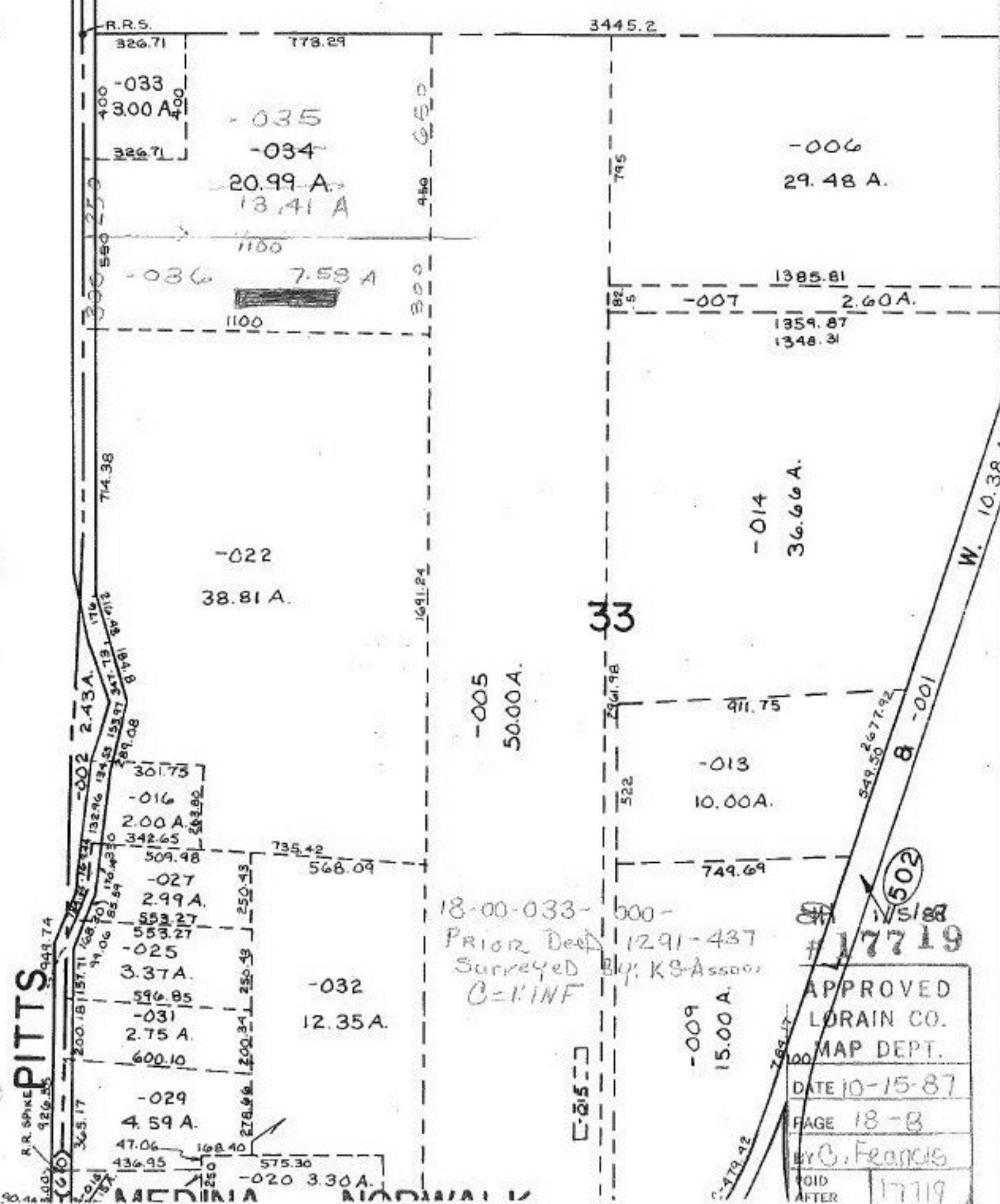


SEI



PITTS

R.R. SPIKE

30.4

MEDINA

18-00-033-500-
 Prior Deed
 Surreyed by KS Assoc
 C=KINF

33

502

APPROVED
 LORAIN CO.
 MAP DEPT.
 DATE 10-15-87
 PAGE 18-B
 BY C. Francis
 VOID AFTER 17719