

SEE UO - UO-058-B

2407.02

727.22

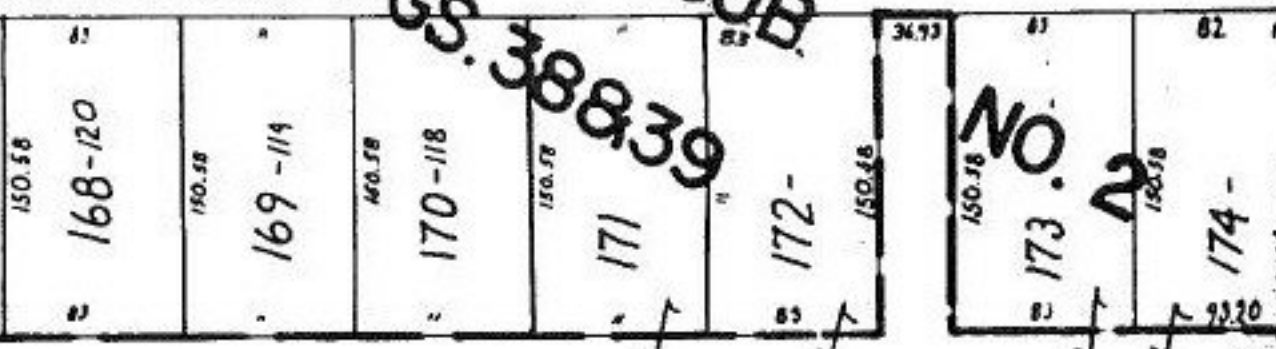
OAKNOLL

PGS. 388, 39
SUB

900

-003 0.92 A. 95

DR.



- 175
- 159
5.68 A.
5.55 Ac.

101

CANT COMB. 10.1 - B7 T.M. 5/16 & ACRES
#17707.A
10-2-87

05-00-063-101
PRIOR Deed 1374-590
Surveyed By K.S. Assoc. Inc,
C=1:500000

APPROVED
LORAIN CO. MAP DEPT.
DATE 9.15.87
PAGE 5-00-063-A
BY T.M. [Signature]
VOID AFTER

APPROVED
LORAIN CO. MAP DEPT.
DATE 9-15-87
PAGE 5-00-063-A
BY C. FRANCIS
VOID AFTER 17664

- 165
9.60 A.

294.39
31.88

ARLINGTON VOI

150
16
12

67.08

11-

19

10-

24