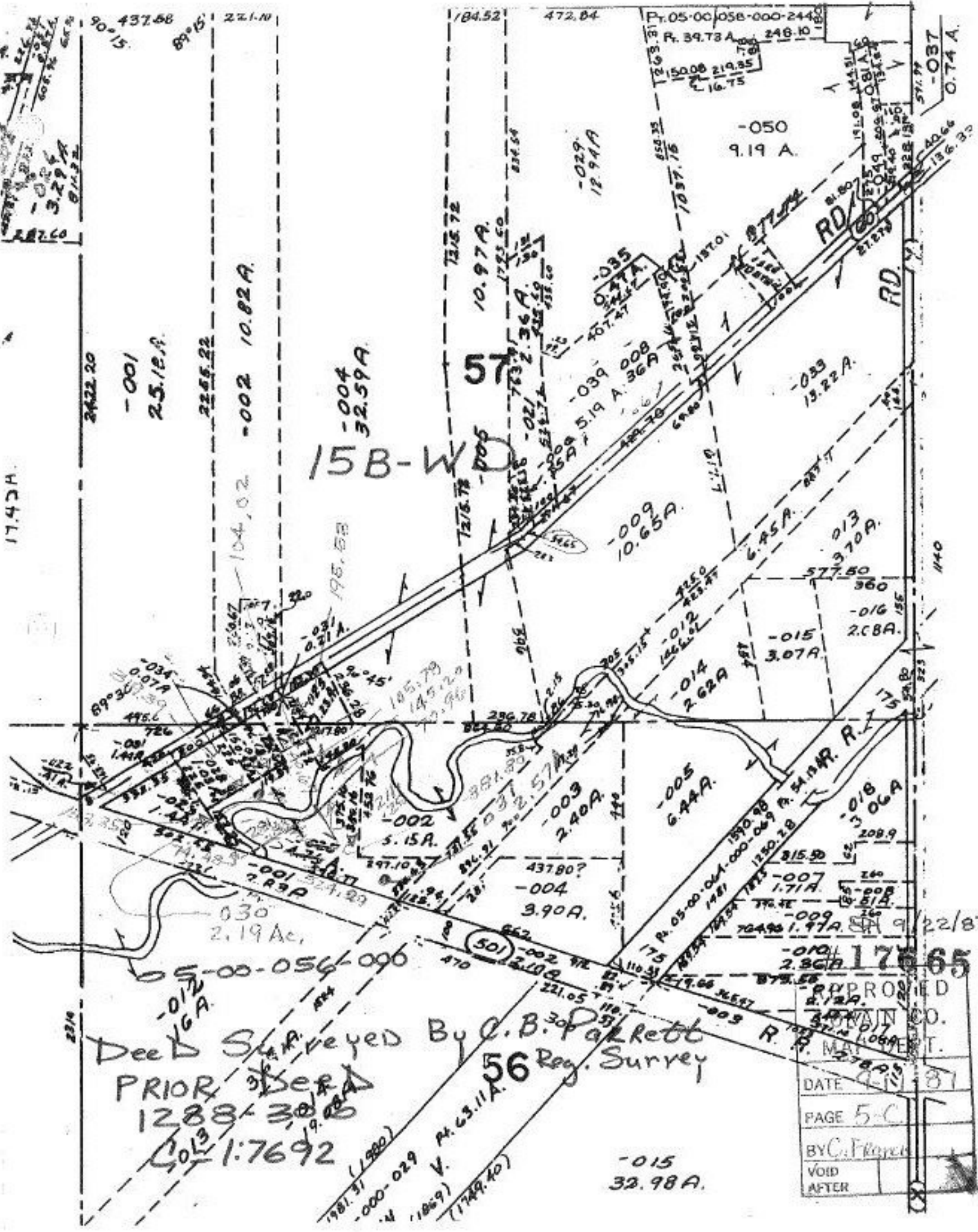


17.42H



15B-W

57

Deed Surveyed By C. B. Parrett
 PRIOR 3/28/87
 1288-30/87
 1:7692
 (1981.31) (1980)
 -000-029 V. R. 63.11A.56 Reg. Survey
 (1749.40)

APPROVED
 [Signature]
 [Signature]
 DATE 9/22/87
 PAGE 5-C
 BY C. Flynn
 VOID AFTER

-015 32.98A