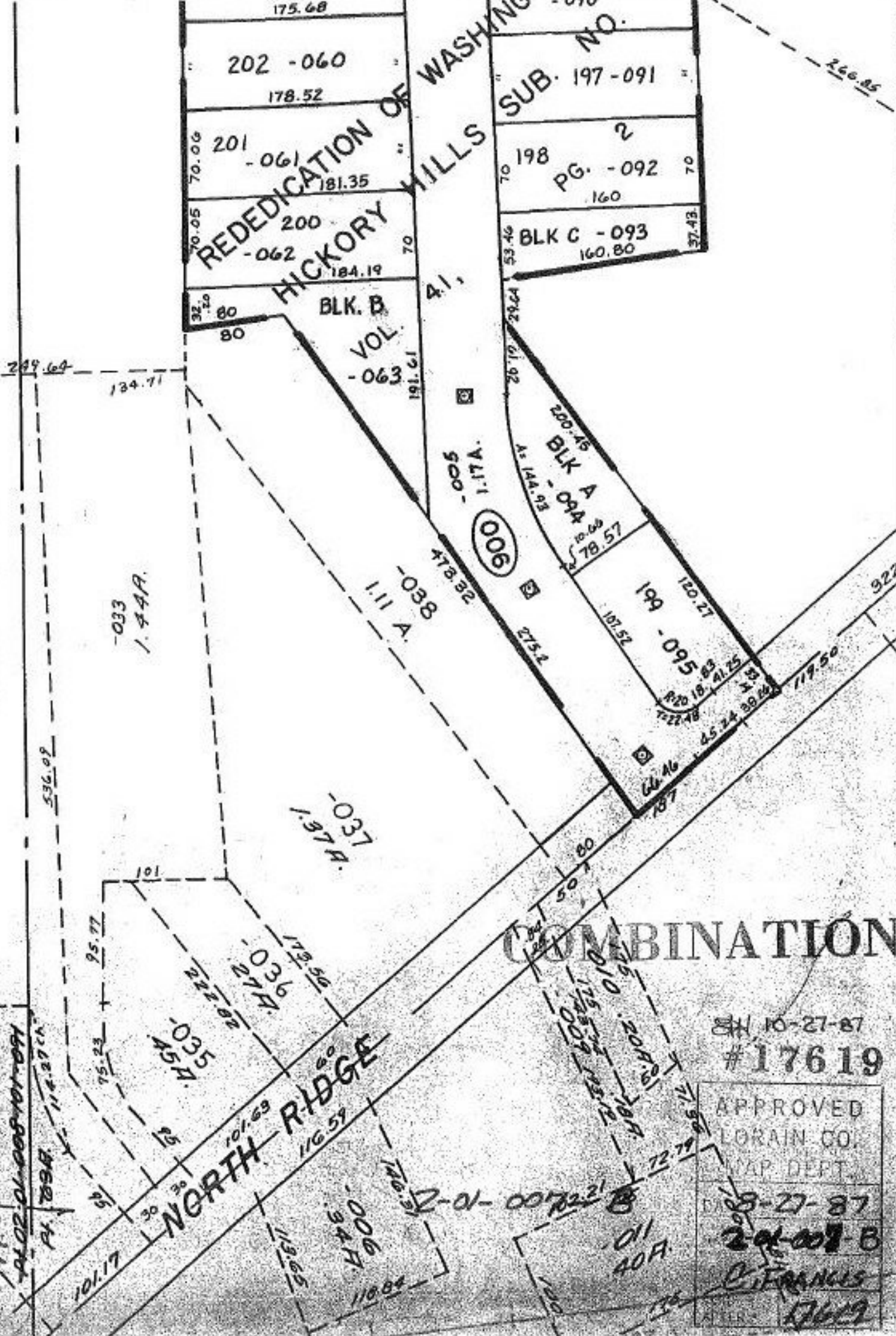


SEE 2-01-008-B

7-0-01-008-101-3163
150-101-800-101-091
1-02-01-008-101-091
1-03-01-008-101-091
1-04-01-008-101-091



COMBINATION

10-27-87
18-12-01
#17619

APPROVED
LORAIN CO.
MAP DEPT.
10-27-87
2-01-008-B
C. FRANCIS
17619