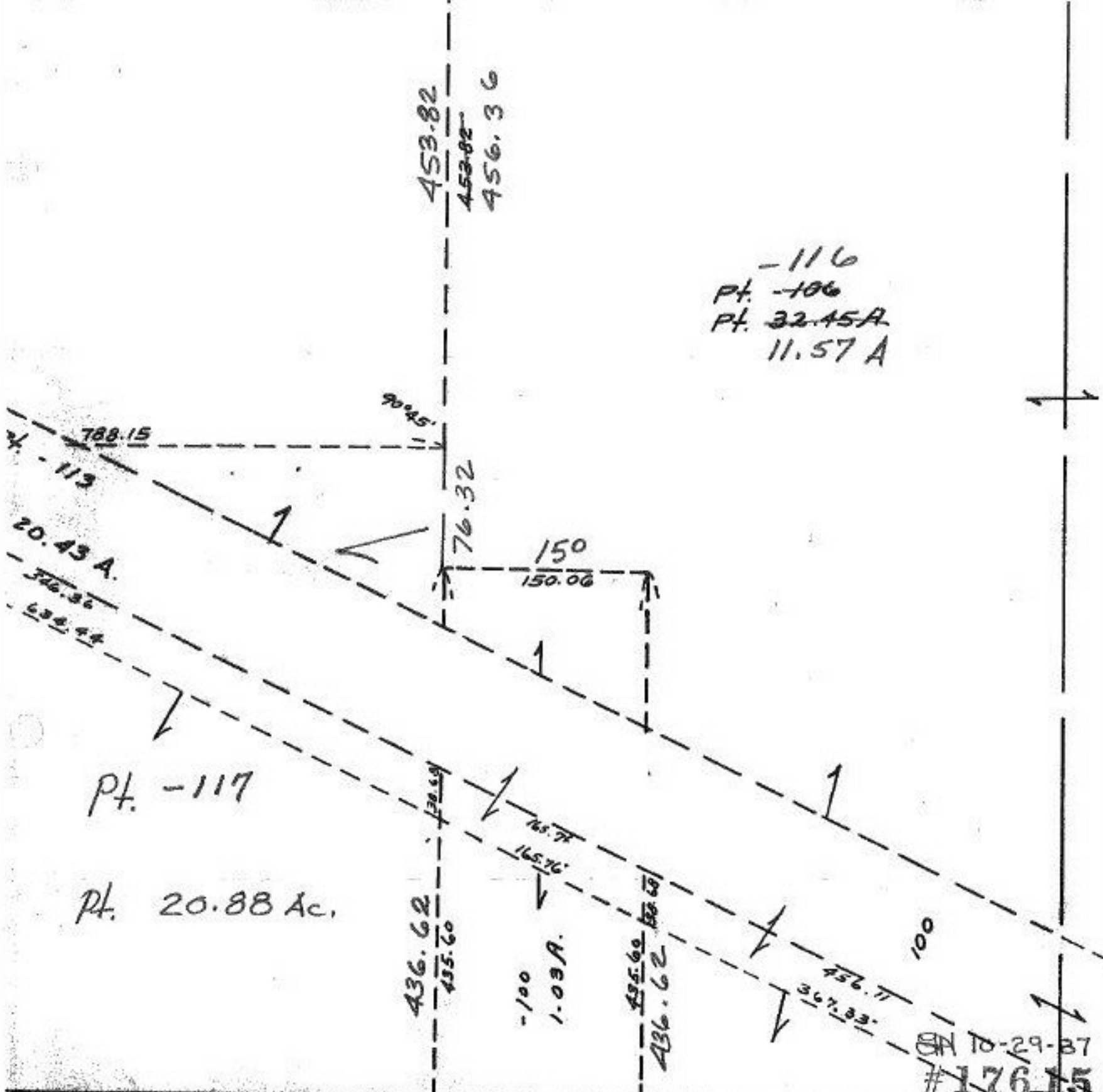


-116  
 Pt. -106  
 Pt. 32.45A  
 11.57 A



10-29-87  
 #17615

45 RD. 506.60  
 2969.91  
 2967

APPROVED  
 LORAIN CO.  
 MAP DEPT.  
 DATE 8-21-87  
 PAGE 4-00-012  
 BY 12 C. Francis  
 VOID AFTER 17615

TRANS. 8/24

W 1/2 SE 1/4 SEC.