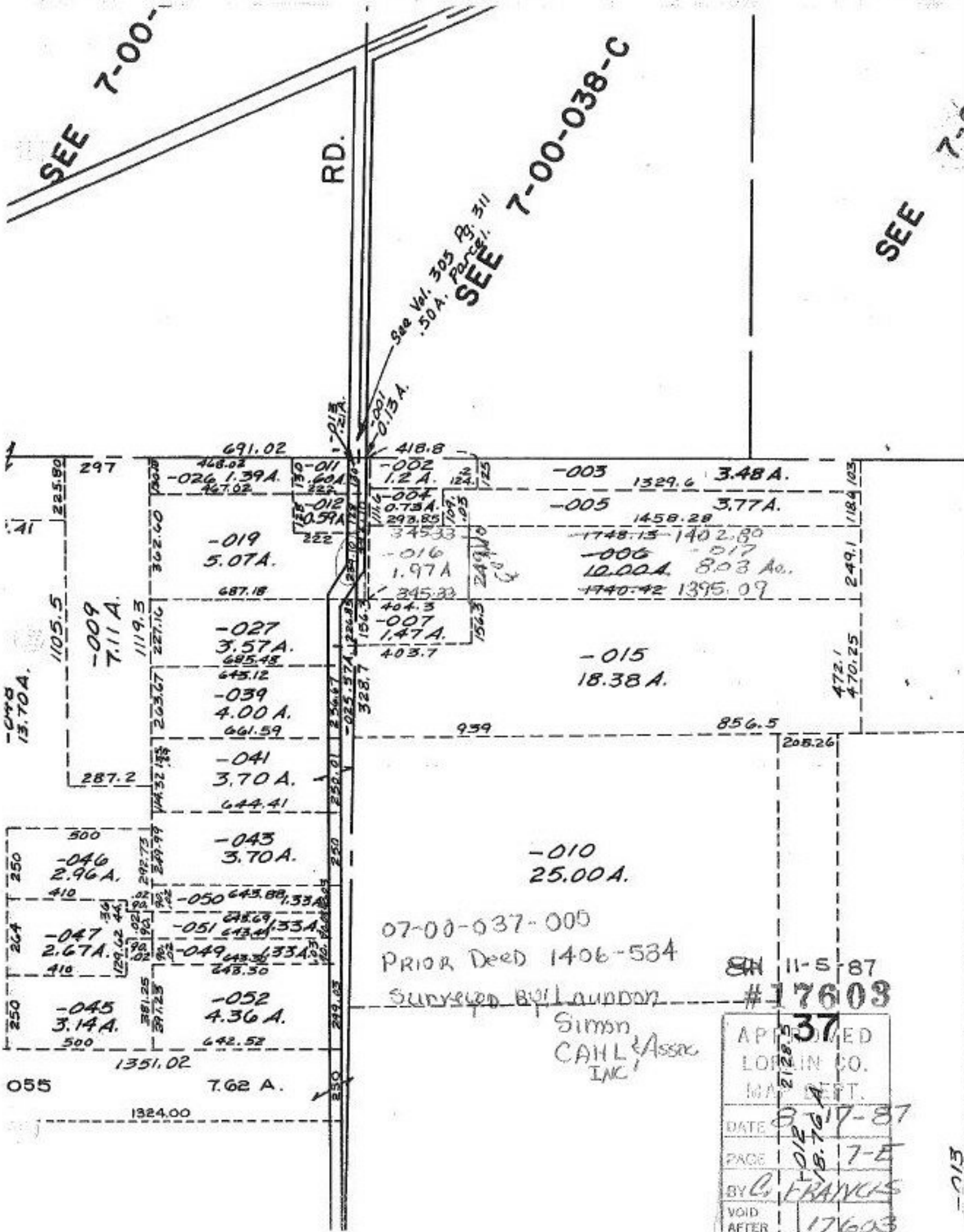


SEE 7-00-

RD.

SEE 7-00-038-C

SEE 7-0



07-00-037-005  
 PRIOR Deed 1406-534  
 Surveyed by Laudon  
 Simon  
 CAHL & Assoc  
 INC

SN 11-5-87  
 #17603

APPROVED	37
LOUISIANA CO.	
MAY 21 1987	
DATE	11-5-87
PAGE	7-E
BY	FRANKS
VOID AFTER	17603

013