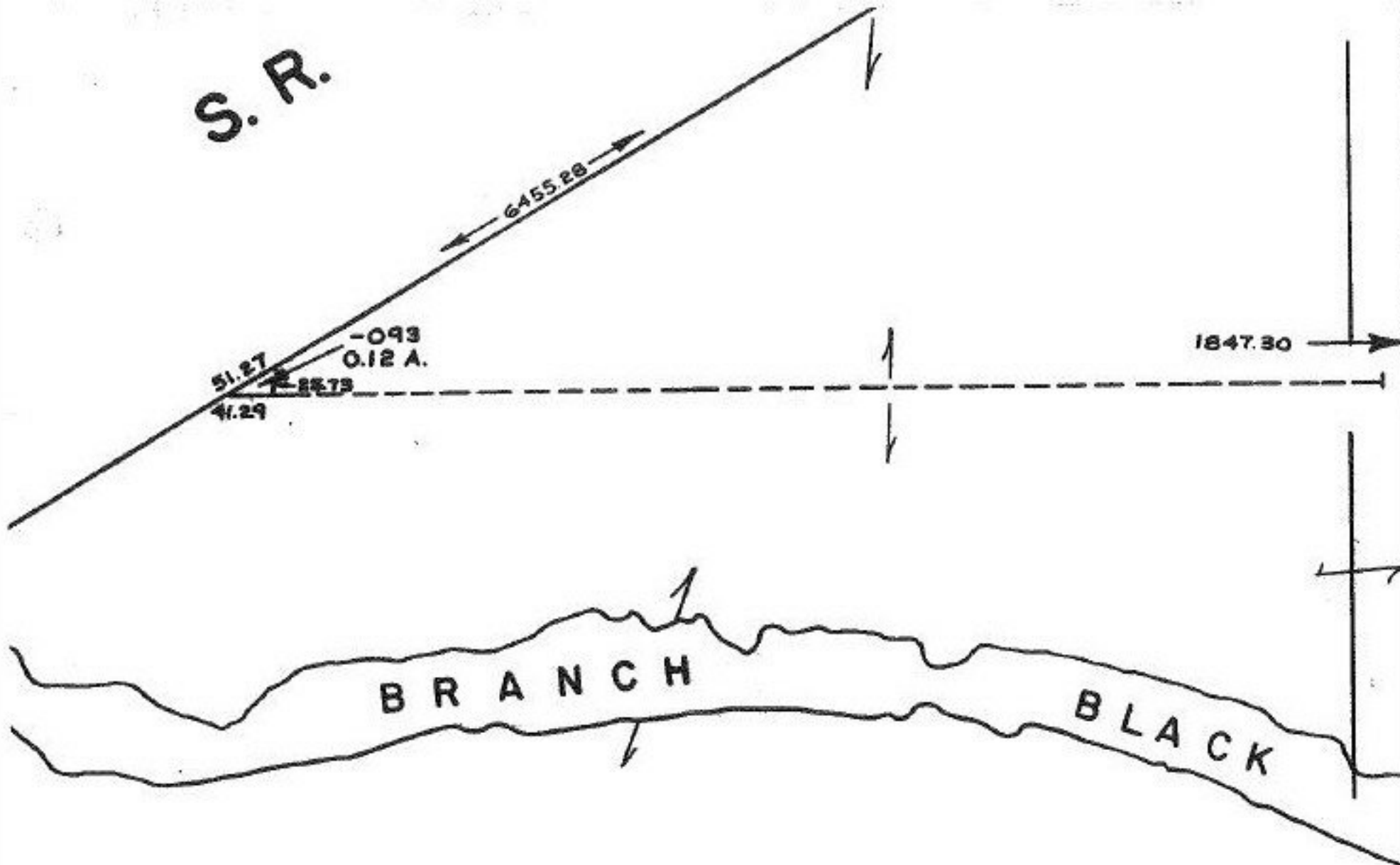


S. R.



Pt. -139  
 Pt. ~~215.95~~ A.  
 209.36 A.

SIN 7-15-87  
 #17531

APPROVED LORAIN CO. MAP DEPT.	
DATE 7-7-87	
PAGE 10-00-012-F	
BY <i>J. E. Gehring</i>	
VOID AFTER	17531

