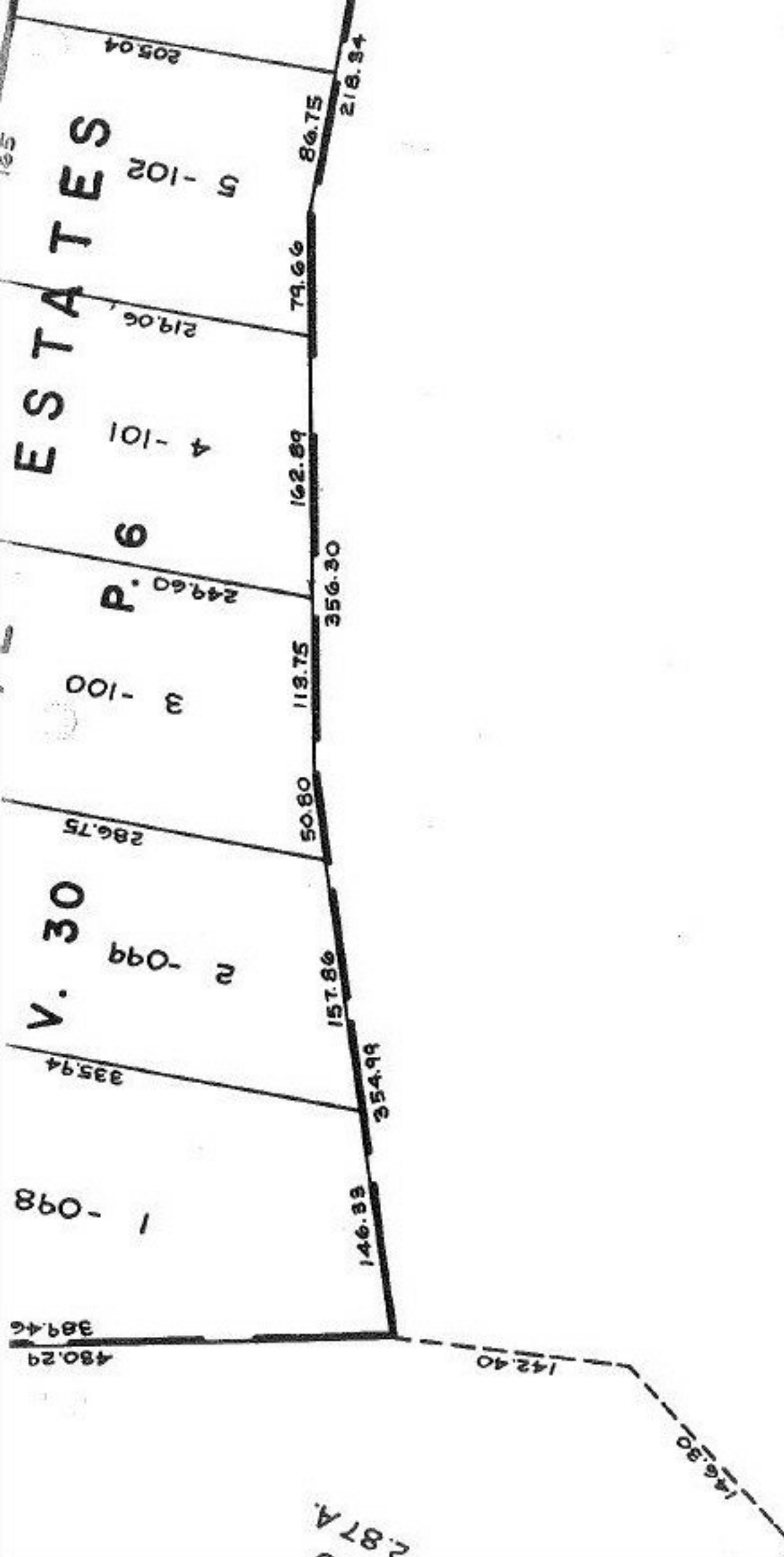


ESTATES

P. 6

V. 30



SA 7-15-87
#17531

APPROVED	
LORAIN CO.	
MAP DEPT.	
DATE 7-7-87	PAGE 10-00-012 F
BY <i>[Signature]</i>	VOID AFTER 17531

Pt. -139
Pt. ~~215-95-A.~~
209.36 A.