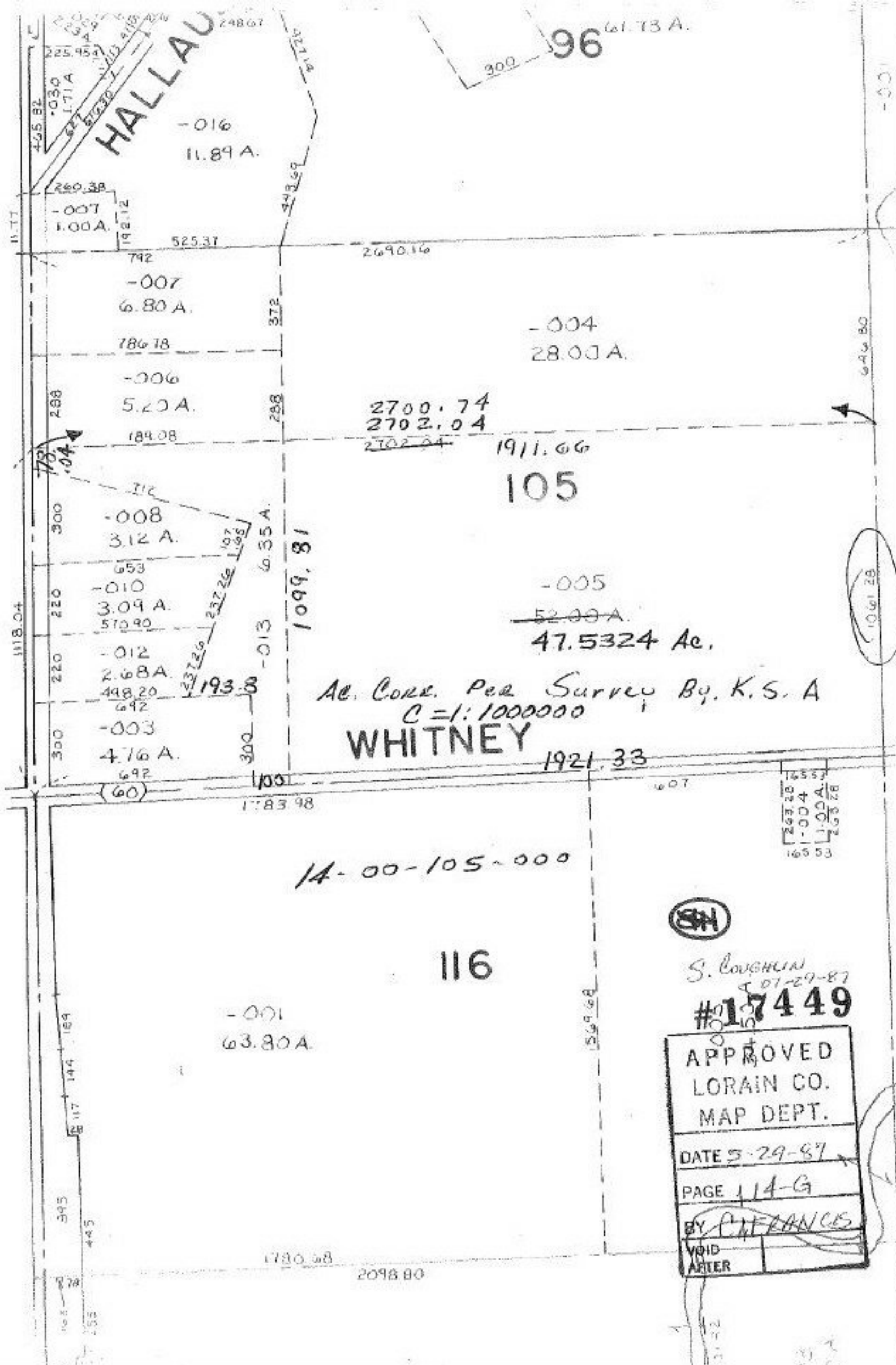


SEE 14-F



HALLAU

96

-016
11.89 A.

-007
6.80 A.

-004
28.00 A.

-006
5.20 A.

2700.74
2702.04
2702.04

1911.66

105

-008
3.12 A.

-005

52.00 A.

47.5324 Ac.

-010
3.09 A.

Ac. Corr. Per Survey By, K.S. A
C=1:1000000

WHITNEY

-012
2.68 A.

1921.33

-003
4.76 A.

14-00-105-000

116

-001
63.80 A.



S. COUGHLIN
5-07-29-87
#17449

APPROVED
LORAIN CO.
MAP DEPT.
DATE 5-29-87
PAGE 114-G
BY P. FRANCES
VOID AFTER