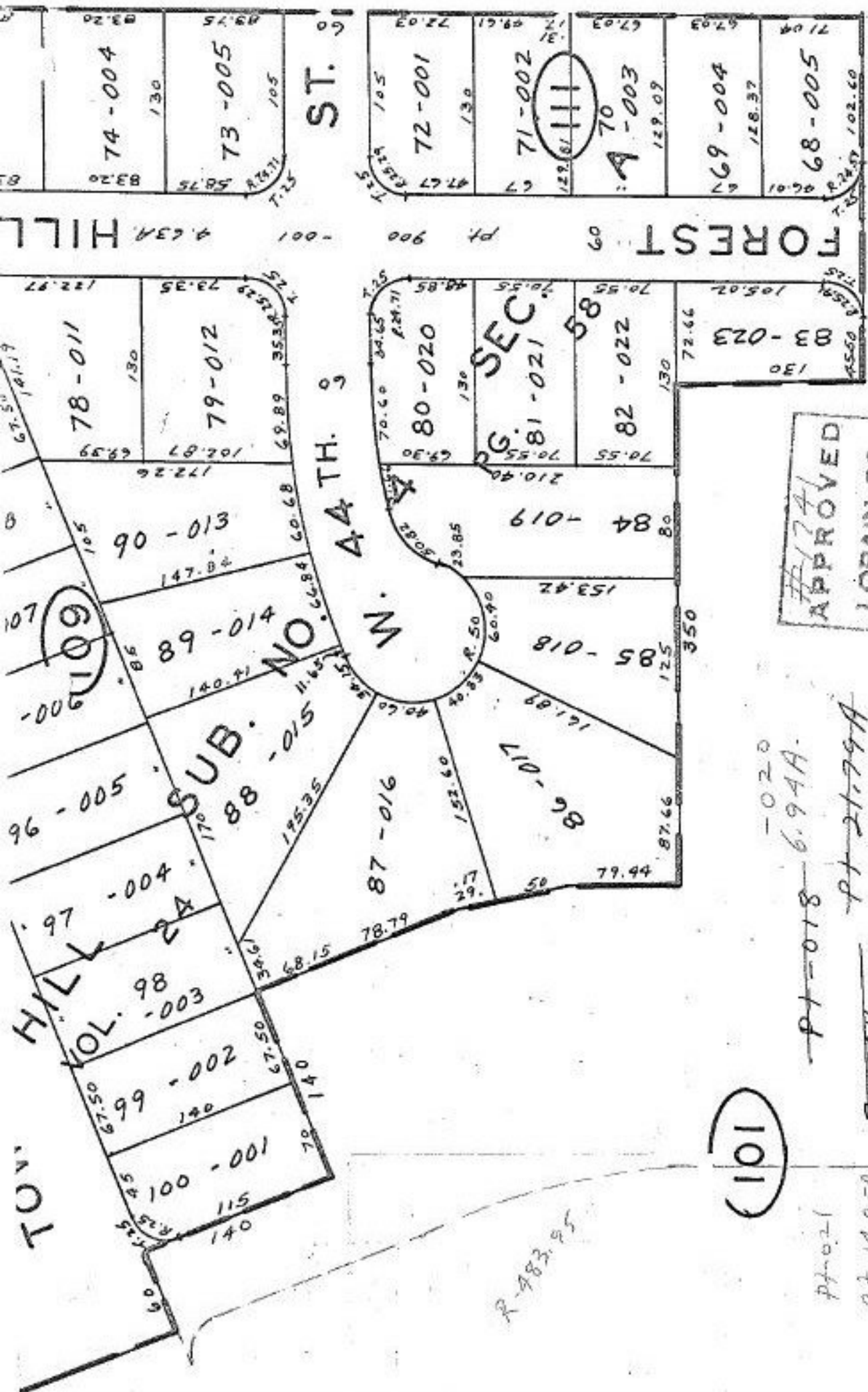


SEE 2-02-006-A



210.08
 258.10
 210.08
 5-22-5

APPROVED
 LORAIN CO.
 MAP DEPT.
 DATE 5-8-68
 02-02-007-B
 BY J. Maynard

7-14-86
 S.S.



-020
 6.94A

PT-018
 PT-011
 PT-5122A
 PT-21-79A

(101)

PT-021
 PT 14,85A

38898

575,26

802.10

R-983.95