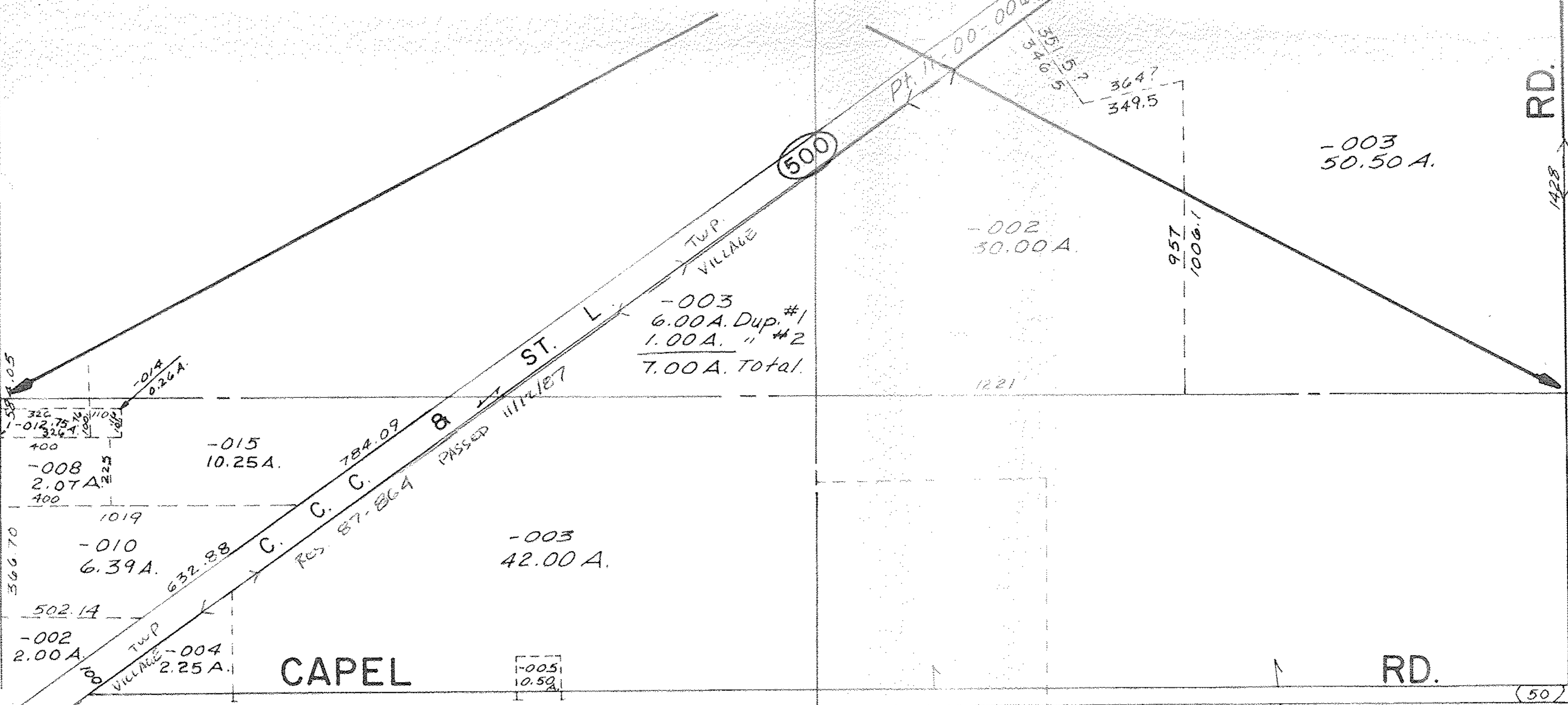


44
-001
144.86 A.

SEE II-G North Part

37
-003
50.50 A.



43

-006
80.00 A.

79
#173

APPROVED
LORAIN CO.
MAP DEPT.
DATE 12/21/87
PAGE II-G SOUTH
BY T. McVain
VOID AFTER 173

-007
30.00 A.

38

TM
12-22-87

79
#173

APPROVED
LORAIN CO.
MAP DEPT.
DATE 12/21/87
PAGE II-G SOUTH
BY T. McVain
VOID AFTER 173

42

-001
97.00 A.

-002
36.40 A.

-003
34.50 A.

-001
16.55 A.

-002
75.25 A.

41

-003
79.75 A.

79
#173

APPROVED
LORAIN CO.
MAP DEPT.
DATE 12/21/87
PAGE II-G SOUTH
BY T. McVain
VOID AFTER 173

39

-001
38.00 A.

-002
62.00 A.

-003
28.75 A.

-004
29.50 A.

-001
37.55 A.

-002
40.25 A.

40

79
#173

APPROVED
LORAIN CO.
MAP DEPT.
DATE 12/21/87
PAGE II-G SOUTH
BY T. McVain
VOID AFTER 173

SEE II-G
ANNEXATION 115,000 A.
#173

II-G South