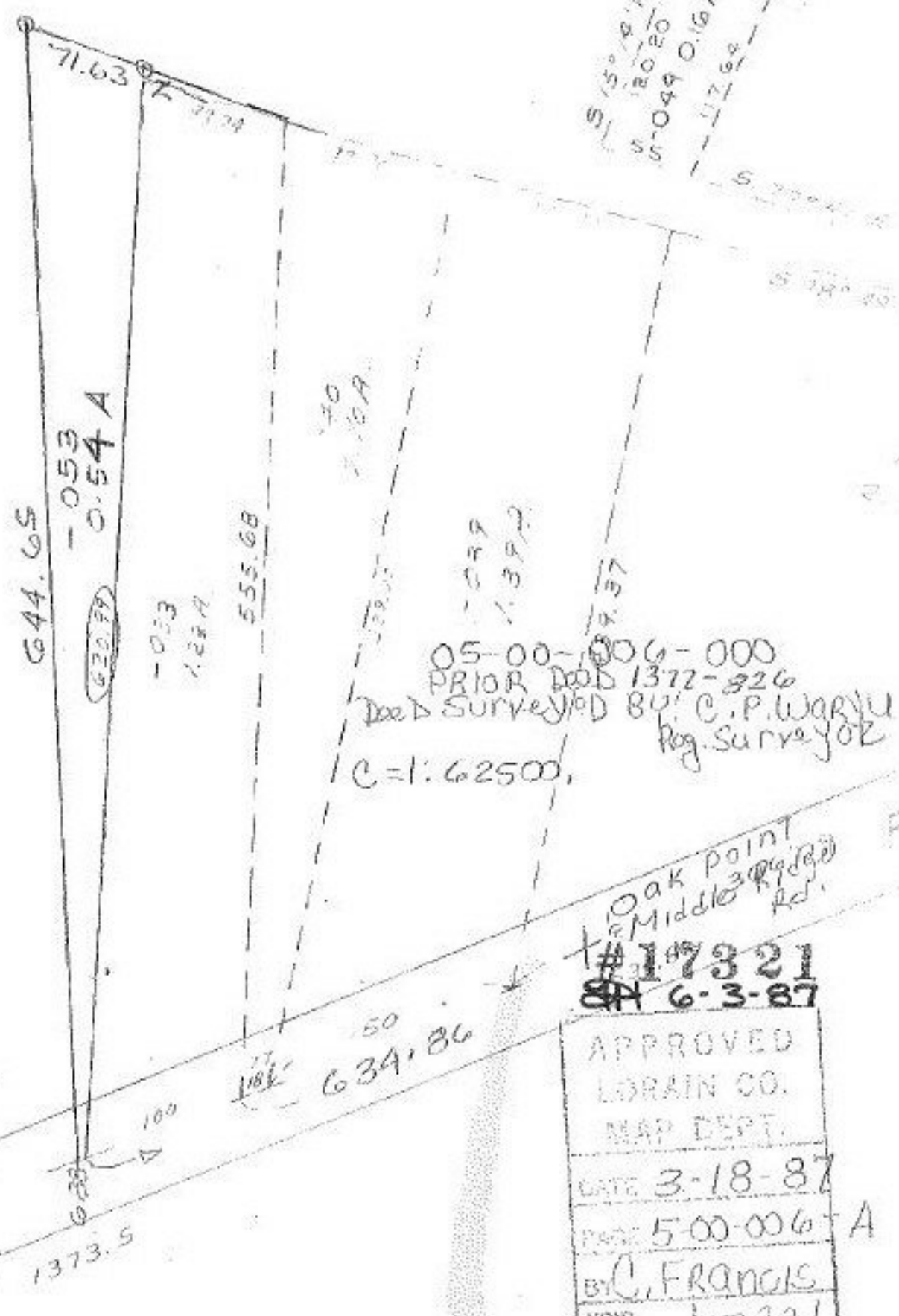
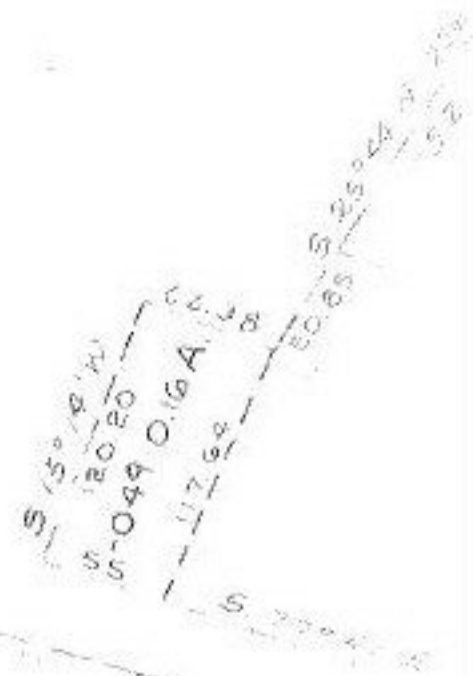


~~052~~
~~28.57A~~

- 054
28.03 A



Oak Point
Middle Ridge
#17321
6-3-87

APPROVED
LORAIN CO.
MAP DEPT.
DATE 3-18-87
PAGE 5-00-006-A
BY C. FRANCIS
VOID AFTER 17321

MIDDLE RIDGE