

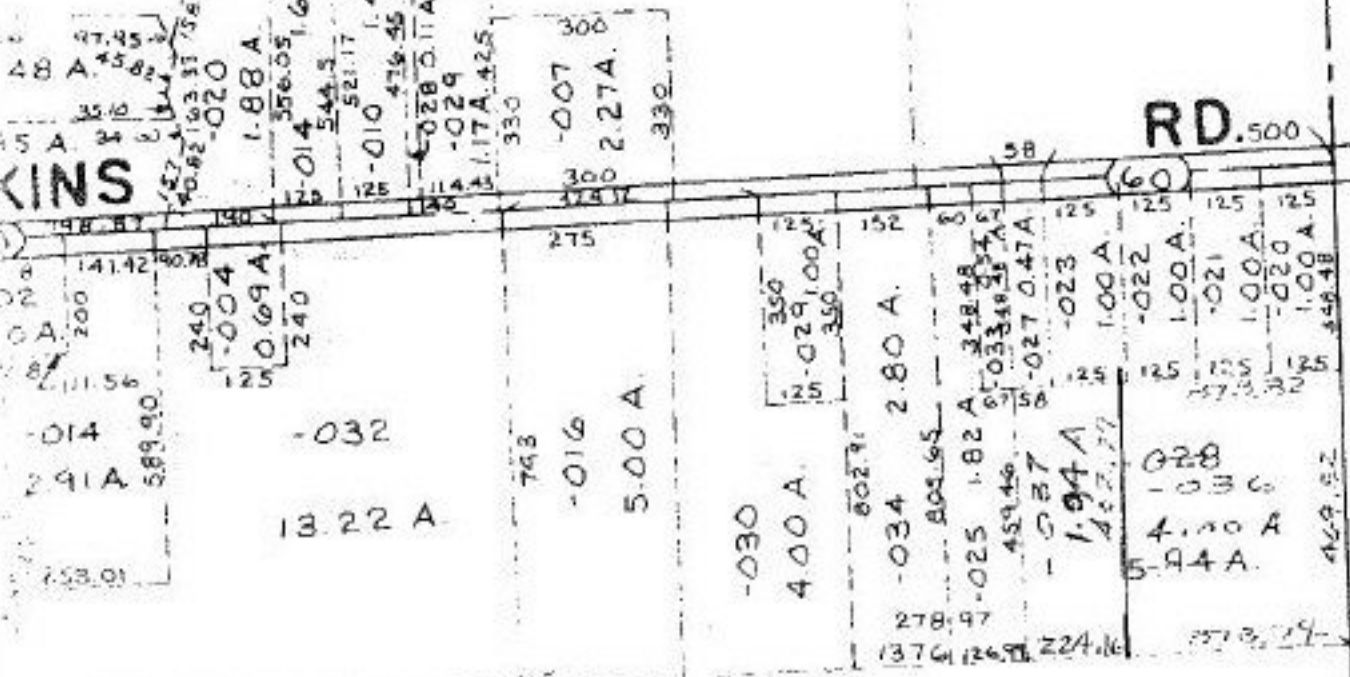
027
90 A.

-008
17.73 A.

-009
19.00 A.

RD. 500

KINS



72 -035
61.34 A.

-007
50.00 A

-001
25.00 A

12-00-072-000
ERIC D. DEB
SURVEYED BY K.S.A.
B=1125000

#17277

APPROVED LORAIN CO. MAP DEPT.	
DATE 2-19-87	
PAGE 12-E	
BY G. FRANCIS	
VOID AFTER	1-12-77