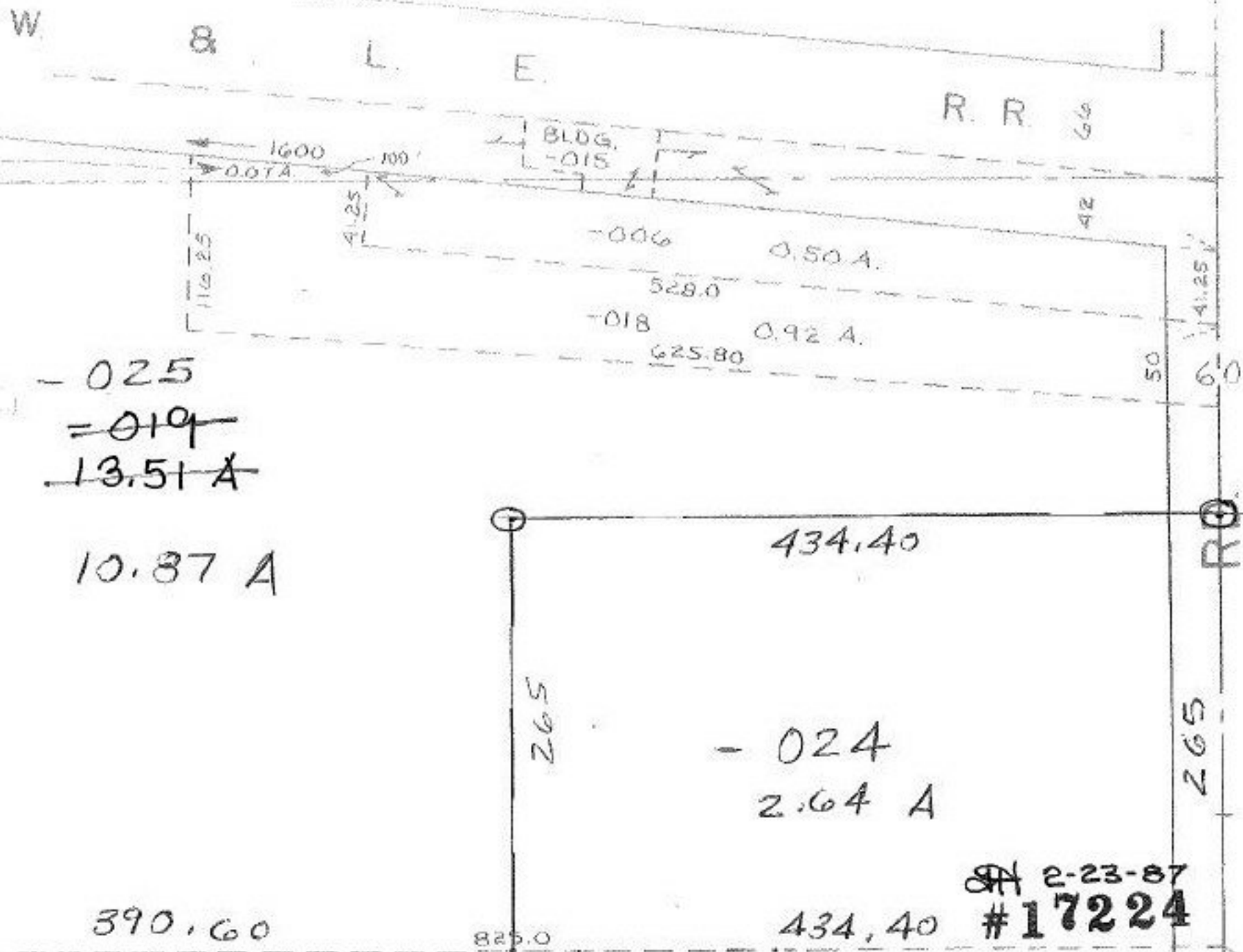


17-07-007-000-

PRIOR DEED 1321-556

SURVEYED BY Mc Glinchy & Assoc.

C=1!



2-23-87  
#17224

APPROVED LORAIN CO. MAP DEPT.	
DATE 1-15-87	
PAGE 17-07-007-B	
BY C. Francis	
VOID AFTER	17224

2322.85 TO  
6 SR 18