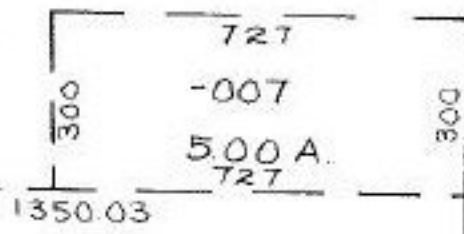


-008
55.44 A.

200



-001
50.00 A.

-005
40.02 A.

SURVEYED BY
W.H. BARTON - C.L. 1:125,000

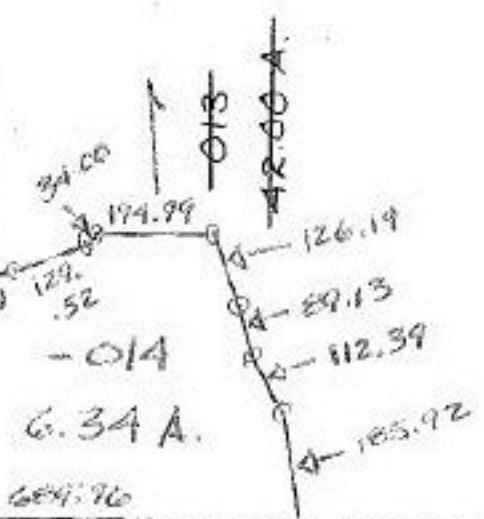
-015
35.66 A.

-006
99.00 A.

-006
32.98 A.

SMITH

572.88



R.R.

SMITH

204.26	435.60	200	200	200	200
435.60	200	200	200	200	200
182.72	435.60	200	200	200	200
163.28	435.60	200	200	200	200

ON 12-31-86
#17131
1167.54

SEE 21-D

PLAT VOL. 26 PG. 33

APPROVED LORAIN CO. MAP DEPT.	
DATE 11-26-86	
PAGE 18-A	
BY T. McMain	
VOID AFTER	