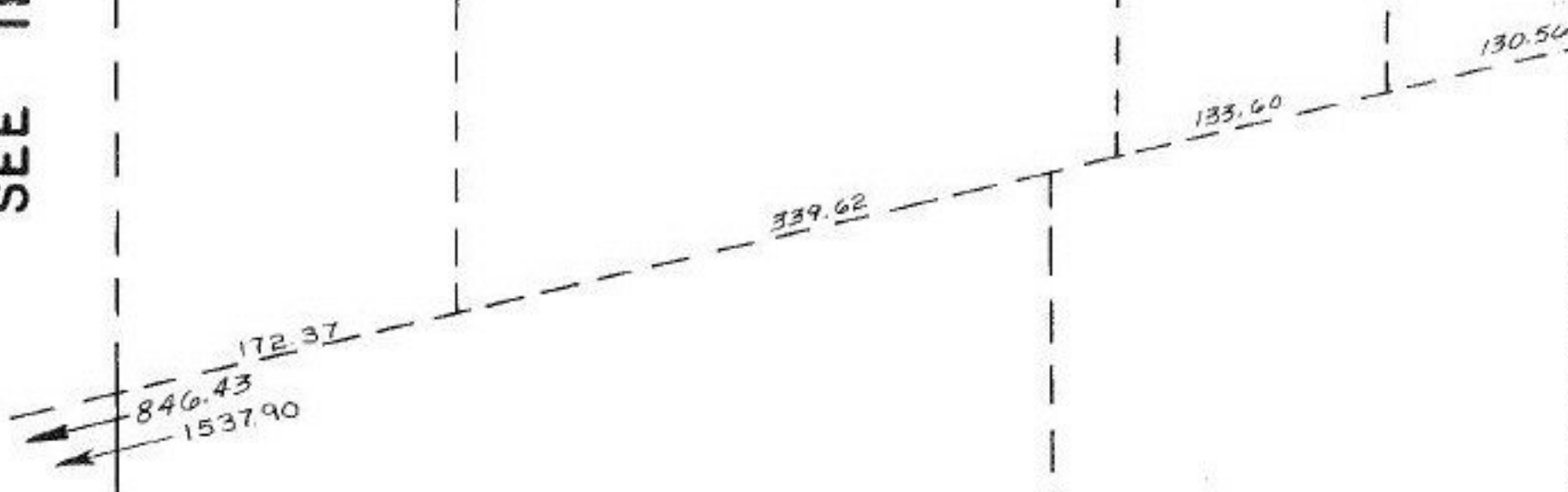


SEE II-(



Pt. -073
Pt. 45.71 A.
~~Pt. 070~~
~~Pt. 46.85 A.~~



1196.80

1099.24
1098.95

SA 12-31-86
#17124

APPROVED	
LORAIN CO.	
MAP DEPT.	
DATE 11-21-86	
PAGE 11-00-071-B	
BY T. McNamee	
VOID	
AFTER	

828.57

11-00-071-000-042
9.94 AC.
875

93