

170346  
699.39

404.85

167395

SEE  
PREVIOUS  
SPLITS →

- # 17006
- # 17079
- # 17100
- # 16961
- ~~-058~~
- ~~38.68A~~

Pt. -068

Pt. 7.07 A.

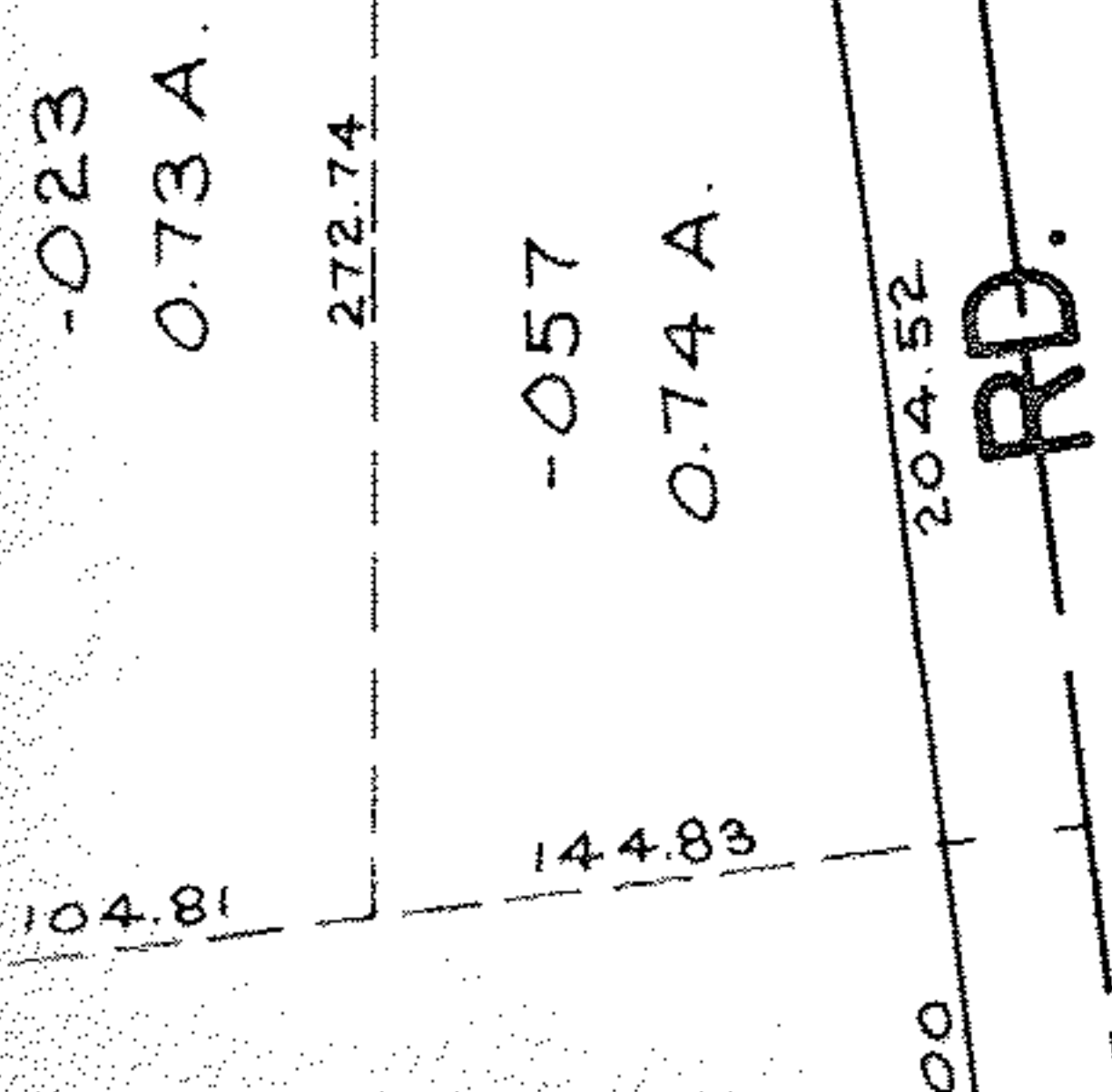
#17100  
12-11-86

APPROVED LORAIN CO. MAP DEPT.
DATE 11-14-86
PAGE 12-00-003-A
BY T. McMain
VOID AFTER

Pt. 10.67 A.  
Pt. -067

1751.08

SEE 12-00-003-B



#17100

APPROVED LORAIN CO. MAP DEPT.
DATE 11-14-86
PAGE 12-00-003-A
BY T. McMain