

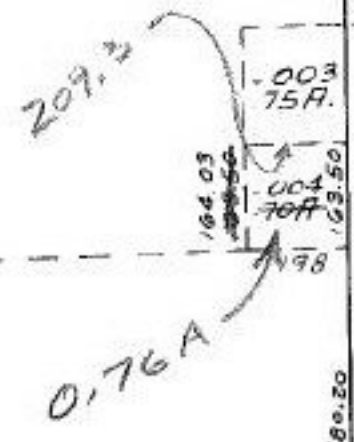
255 -034 4.00A 683.29 255
200 2.00A 435.65 200

-001
37.48

-009
39.00A

278
-004
12.00

-007
41.12A



-006
49.96

2474.69

-006
35.87A

31 2660.63

-005
80.00A

-0
100.

2626.80

89018

#17088

ACREAGE
CORRECTION

ON 11-12-86
#17088
APPROVED
LORAIN CO.
MAP DEPT.
DATE 10-29-86
PAGE 9-A
BY *J. Balch*
VOID
AFTER 17088

-0
52.