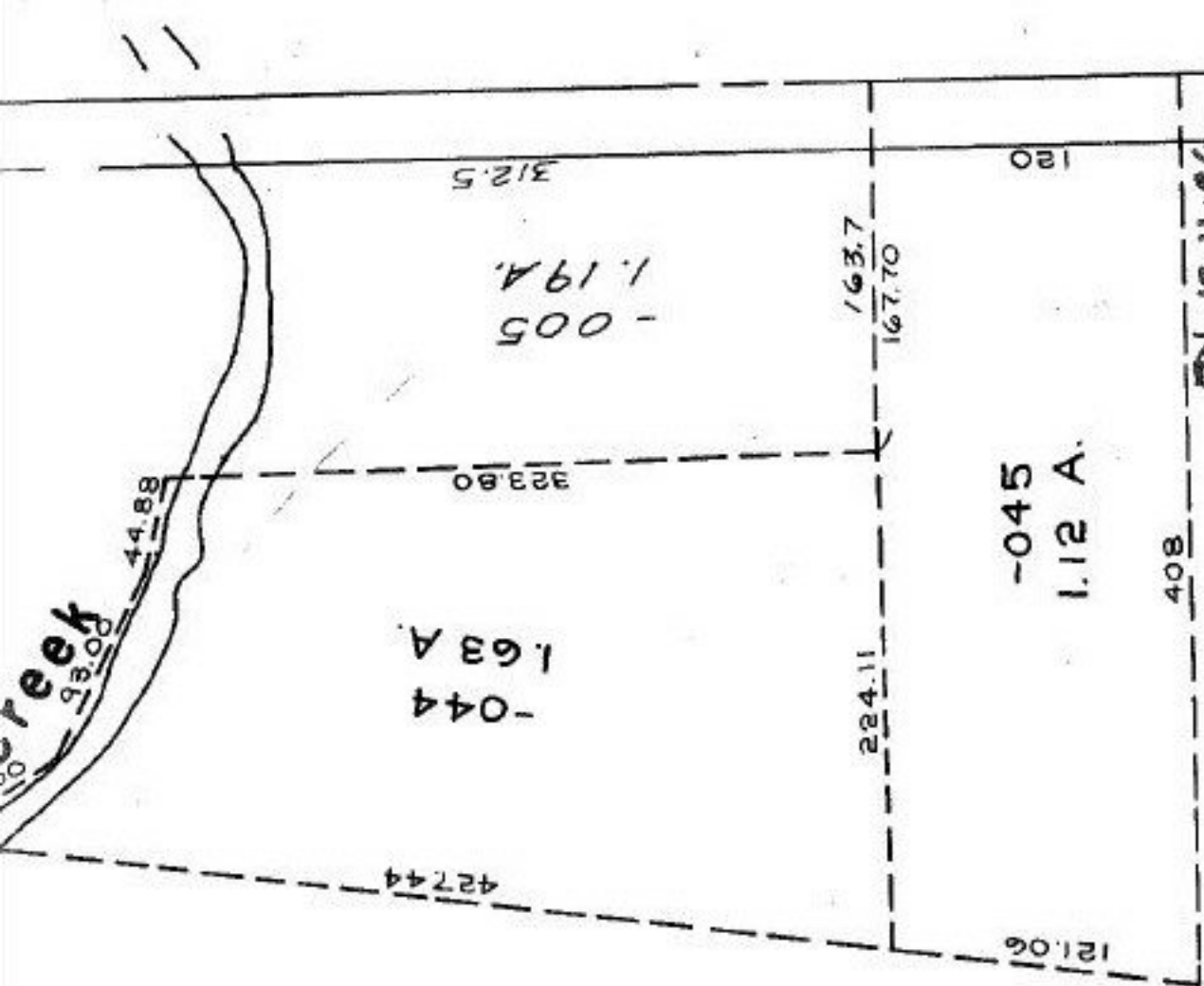


Peek



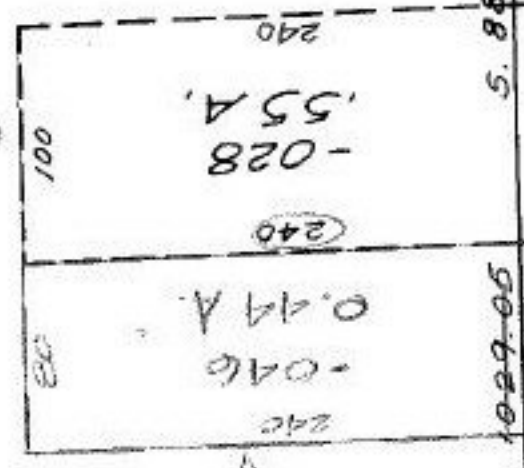
APPROVED
LORAIN CO.
MAP DEPT.
DATE 11-19-86
PAGE 15-00-020
BY T. McHain

EN 12-11-86
#17065

Pt. -047
Pt. 30.27 A.

~~Pt. -029~~
~~Pt. 30.71 A.~~

-045
1.12 A.



SURVEYED BY
K.S.A. (SEE MAP)
CL. 11:00

RD

PLATE 100

NICKLE

1029.05

115

-024
1.63 A.

300-720

5.88° 30' 30" W.

1029.05

115

RD