

SEE 6-19

SEE 6-21

R.R.

L. Pt. 06-22-020-108-004  
W. Pt. 34.29 A.  
Pt. 438.15

V. 500

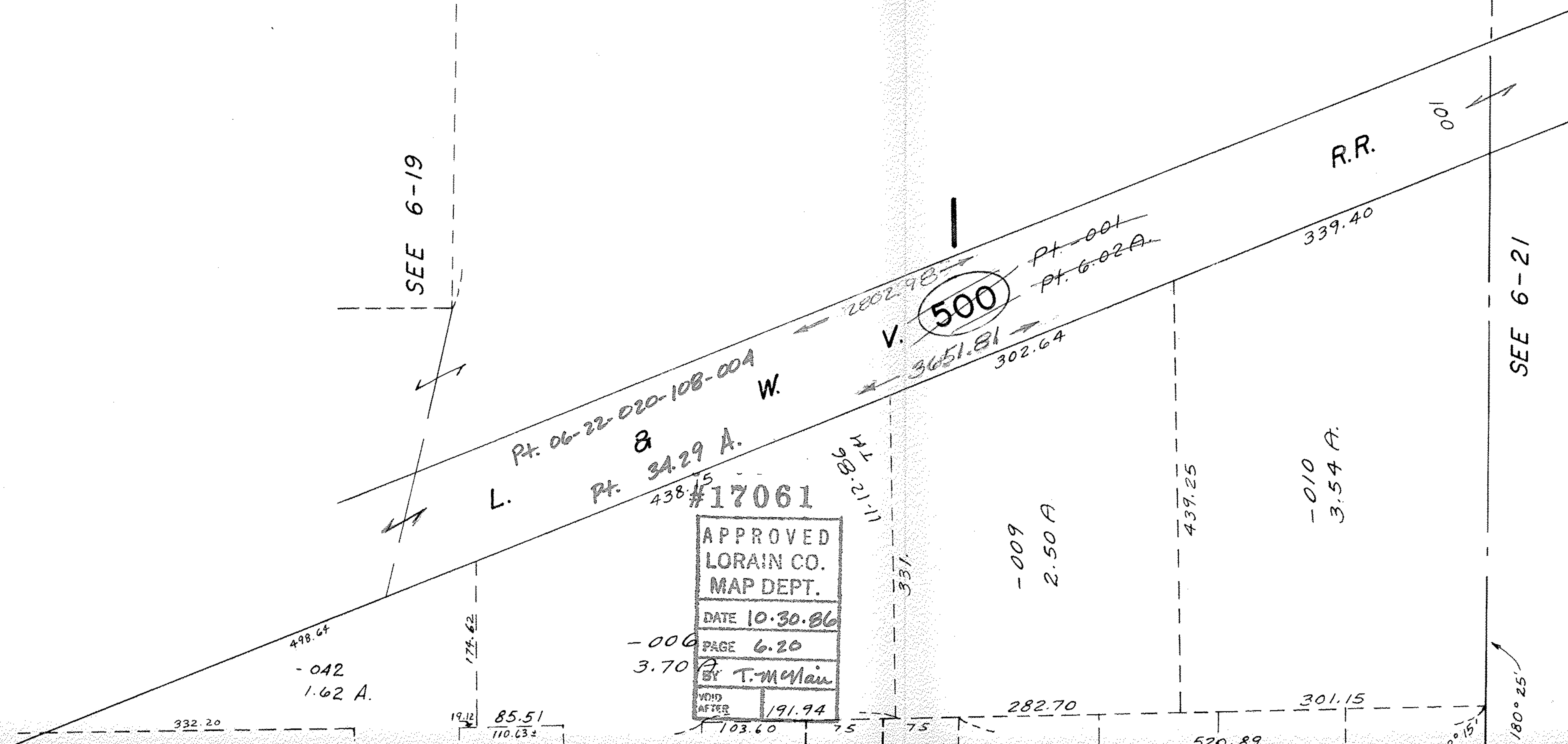
#17061

APPROVED
LORAIN CO.
MAP DEPT.
DATE 10.30.86
PAGE 6.20
BY T. McVain
VOID AFTER 191.94

11.12.86  
T.M.

#17061

APPROVED
LORAIN CO.
MAP DEPT.
DATE 10.30.86
PAGE 6.20
BY T. McVain
VOID AFTER



20