

34.70 F.

- 006 2.95 F.

- 007
44.71 F.

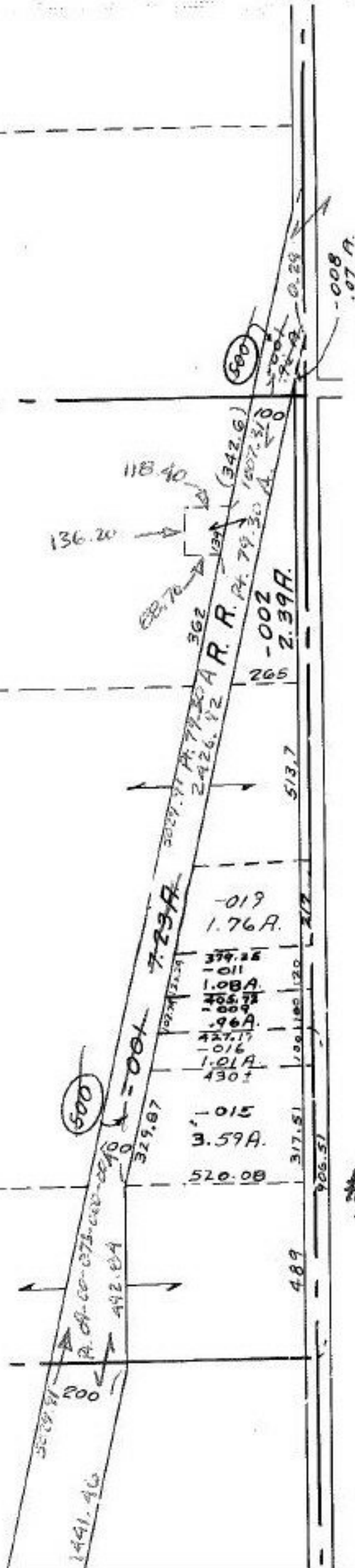
- 001
47.44 F.

2450

63

- 018
74.41 A.

- 006
29.28 F.



11.12.86 T.H.
#17061

APPROVED LORAIN CO. MAP DEPT.	
DATE 11-3-86	
PAGE 9-E	
BY T. McMan	
VOID AFTER	