

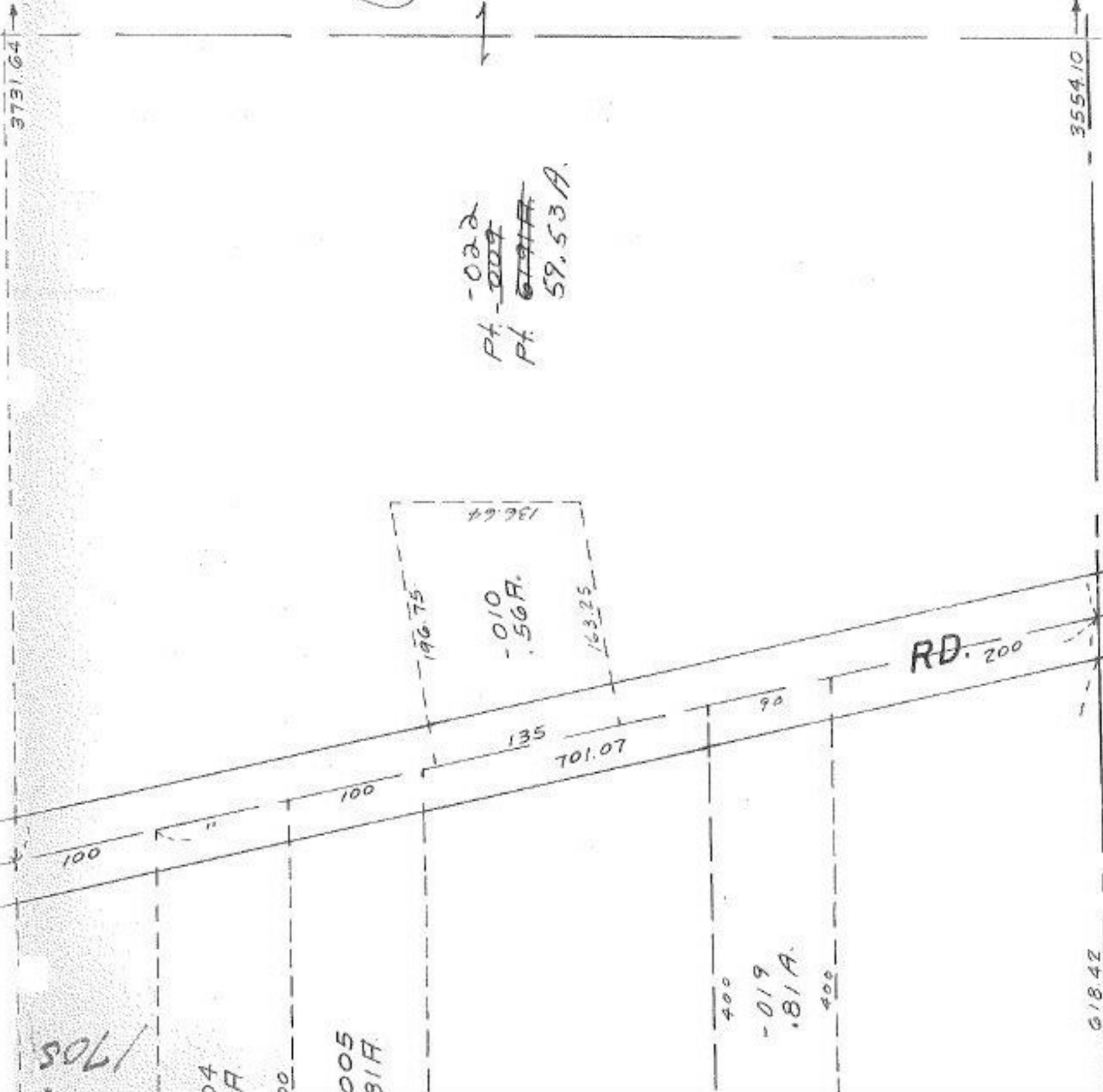
1705

04
R

005
81A

400
-019
81A
400

618.42



Pt -022
~~Pt -009~~
~~Pt -019~~
 59.53A



1705

APPROVED
LORAIN CO.
MAP DEPT.
DATE 5-17-68
6-112
BY C. Bollock

Eric 7/30/68
Franklin

9028-2-9