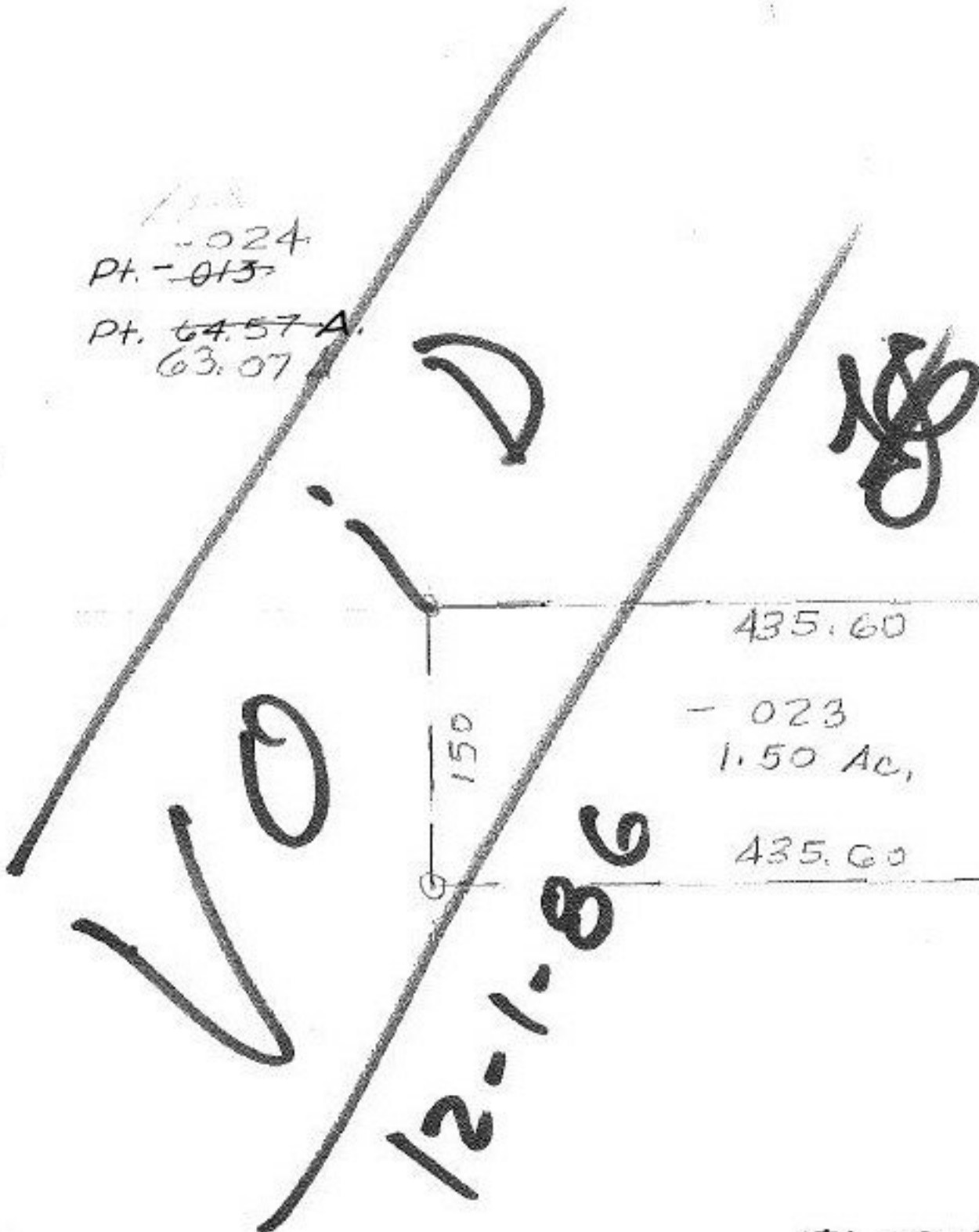


19-04-001-000

-024  
Pt. -013  
Pt. ~~64.57 A.~~  
63.07



435.60  
- 023  
1.50 AC.  
435.60

12-1-86

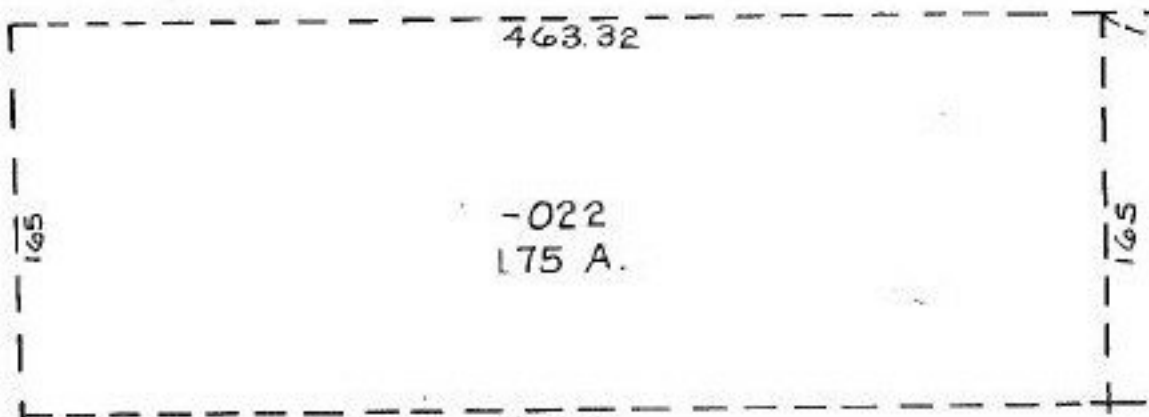
JFB

RD. 1460.18

150

270.85

301



463.32

-022  
175 A.

165

1-6-87  
#17031

APPROVED	
JUN 26 1987 205.33 CO.	
MAP DEPT.	
DATE	9-23-86
PAGE	1.00 A.
BY	C. FRANCIS
VOID AFTER	17031

19-04-001-B

SFF 19-04-012-B

6  
C