

1703

600-9 P. 195 V

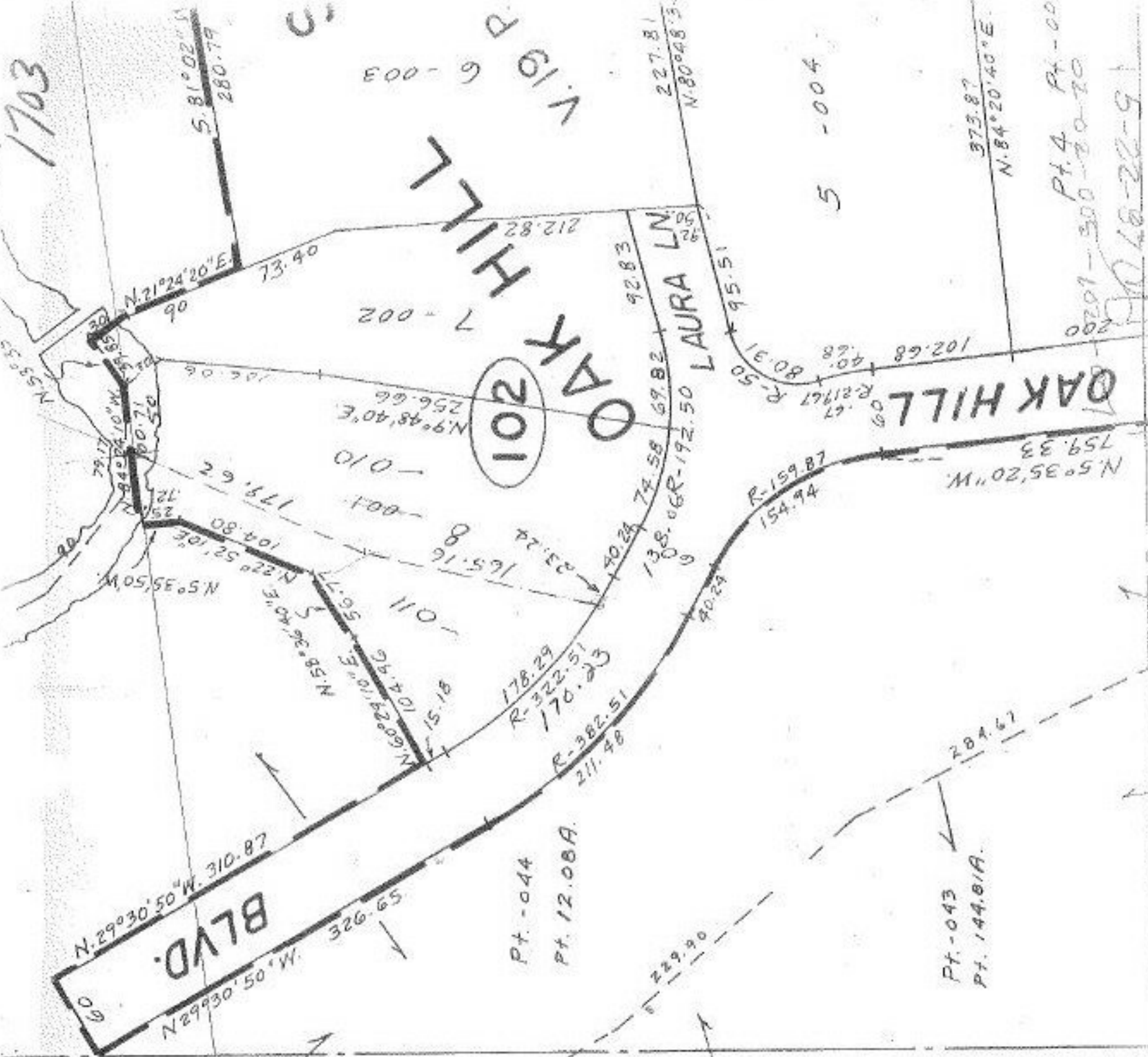
OAK HILL  
102

227.81  
N.80°48'3.0"

5 - 004

373.87  
N.84°20'40"E

Pt. 4 Pt. - 00  
00701-300-20-70  
006-22-9



Done 7-6-68 LW Hall



1703

APPROVED
LORAIN CO.
MAP DEPT.
DATE 4-26-68
R-C3005-A
BY <i>[Signature]</i>

7-21-86  
S.S.