

60

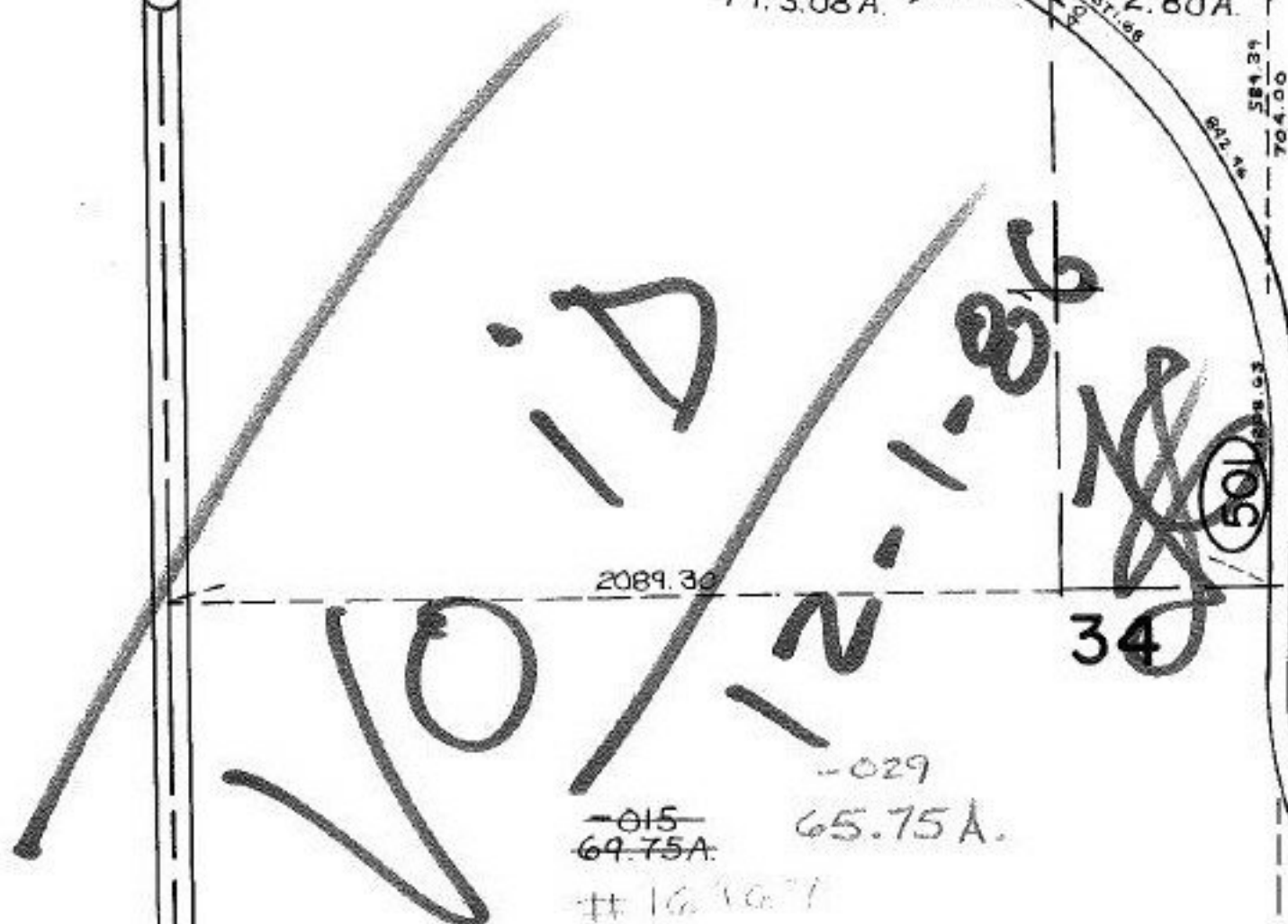
-026

3.02A.

Pt.-002
Pt. 3.08A.

-025
2.80A.

SEE 18



2089.30

-029

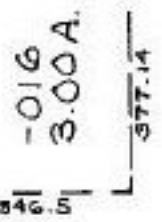
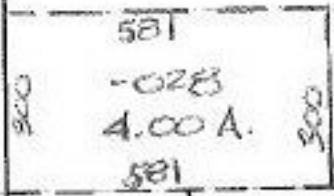
-015
69.75A.
16967

65.75A.

Pt.-
Pt. 70

SURVEYED BY
A. KOEPP CL. 1:00

Pt.-001
Pt. 3.08A.



753.44

-017
22.00A.

1099.89

-025
34.25A.

75 RDS.

1238.16

ON 12-30-86
#16967

APPROVED	
LORAIN CO.	
MAP DEPT.	
DATE 9.3.86	
PAGE 18-F	
BY T. McNamee	
VOID	
AFTER	

-003

C.

51