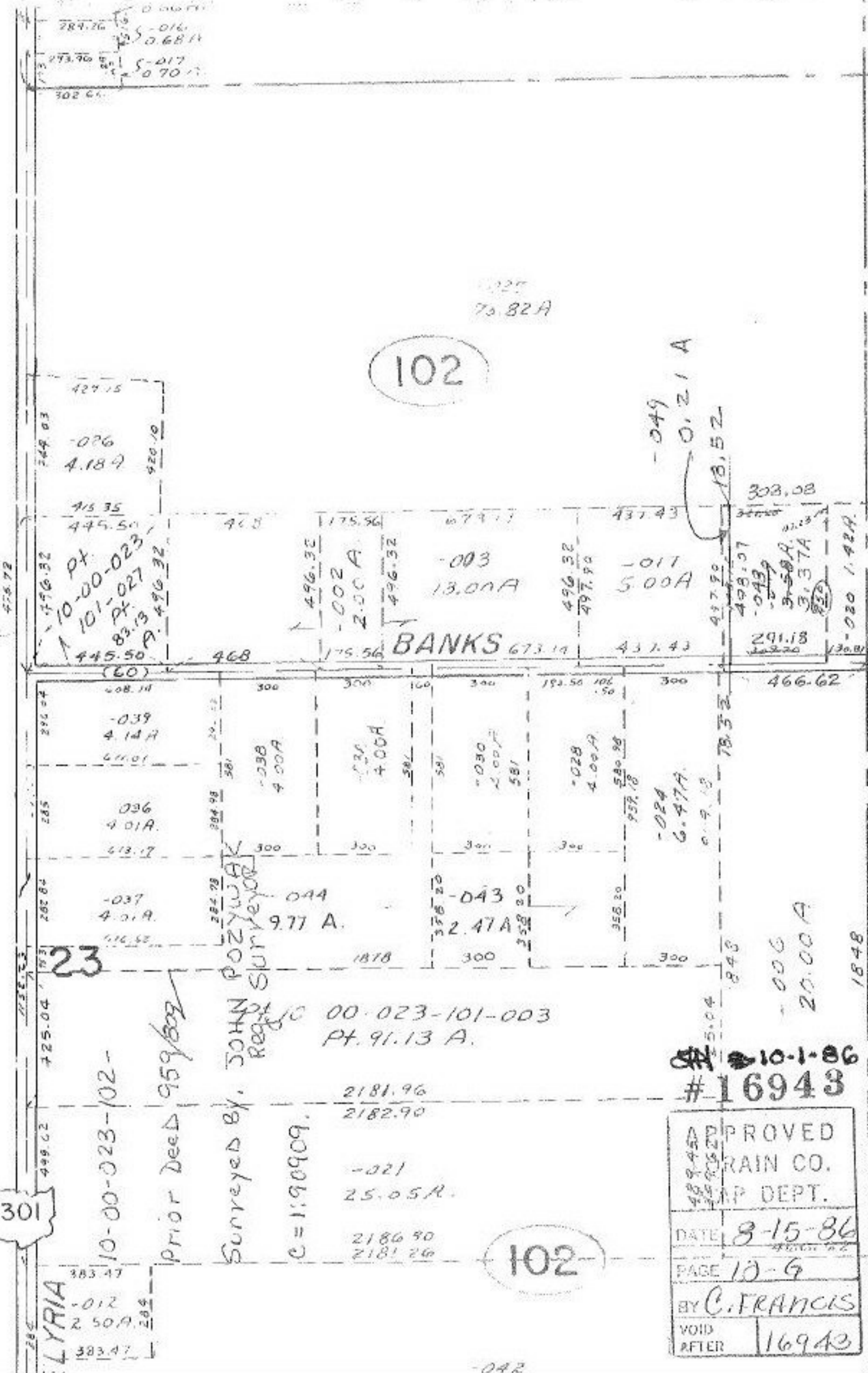


ISILE I WP.

SECS. S.E. 1/4 10, S. 1/2 17, 18, E. 1/2 23, & 2



102

BANKS

23

102

ELYRIA
 383.47
 -0.12
 2.50 A
 383.47

10-00-023-102-

Prior Deed 959/809

Surveyed by JOHN POZYWAK
Regd. Surveyor

C=1:90909.

00-023-101-003
Pt. 91.13 A.

2181.96
2182.90

-021
25.05 A.

2186.90
2181.26

#16943

PROVED	RAIN CO.
AP DEPT.	
DATE	8-15-86
PAGE	10-9
BY	C. FRANCIS
VOID AFTER	16943