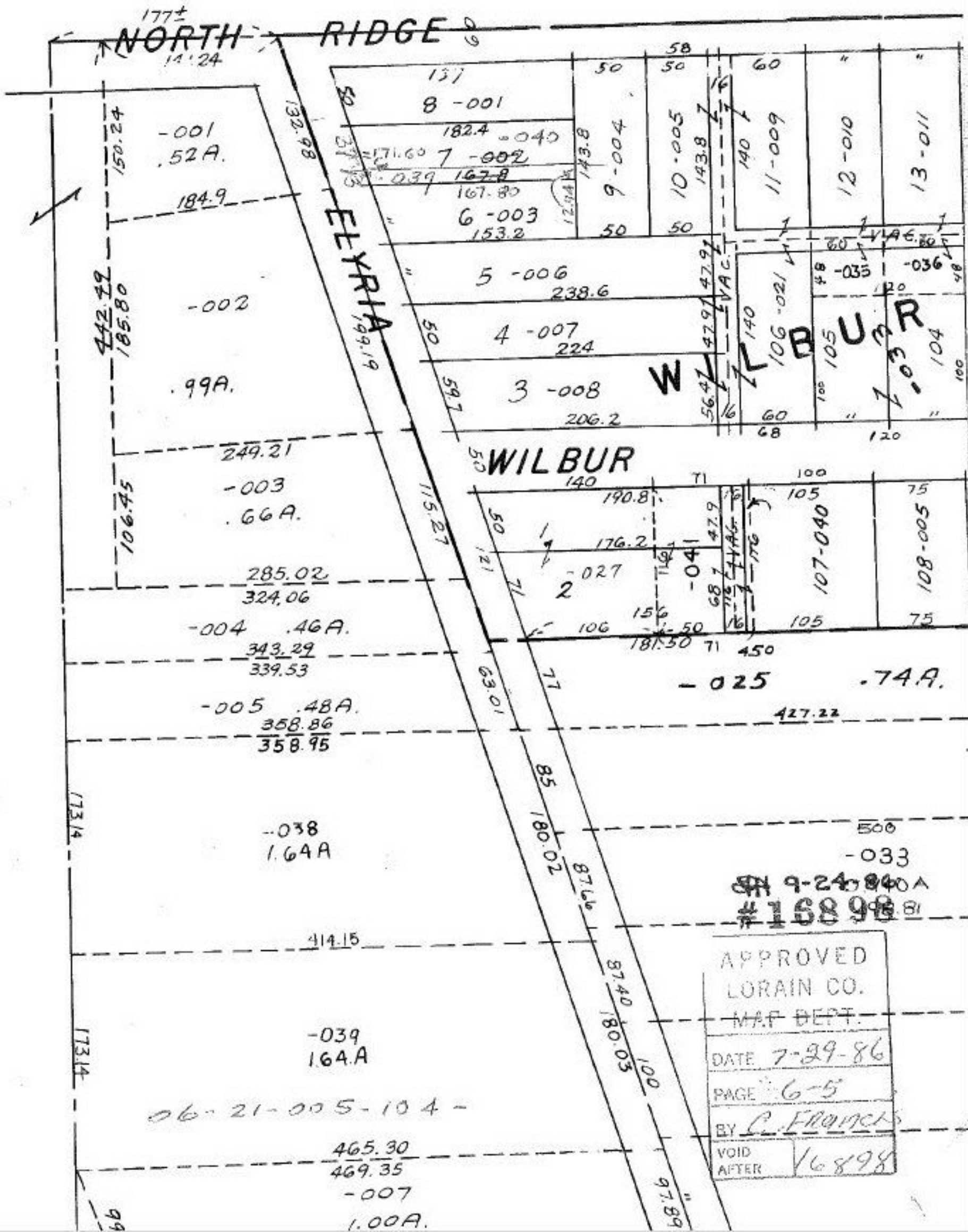


SEE 3-00-III-A



9-24-86  
 #16898

APPROVED  
 LORAIN CO.  
 MAP DEPT.  
 DATE 7-29-86  
 PAGE 6-5  
 BY C. Francis  
 VOID AFTER 16898

06-21-005-104-

465.30  
 469.35  
 -007  
 1.00A.