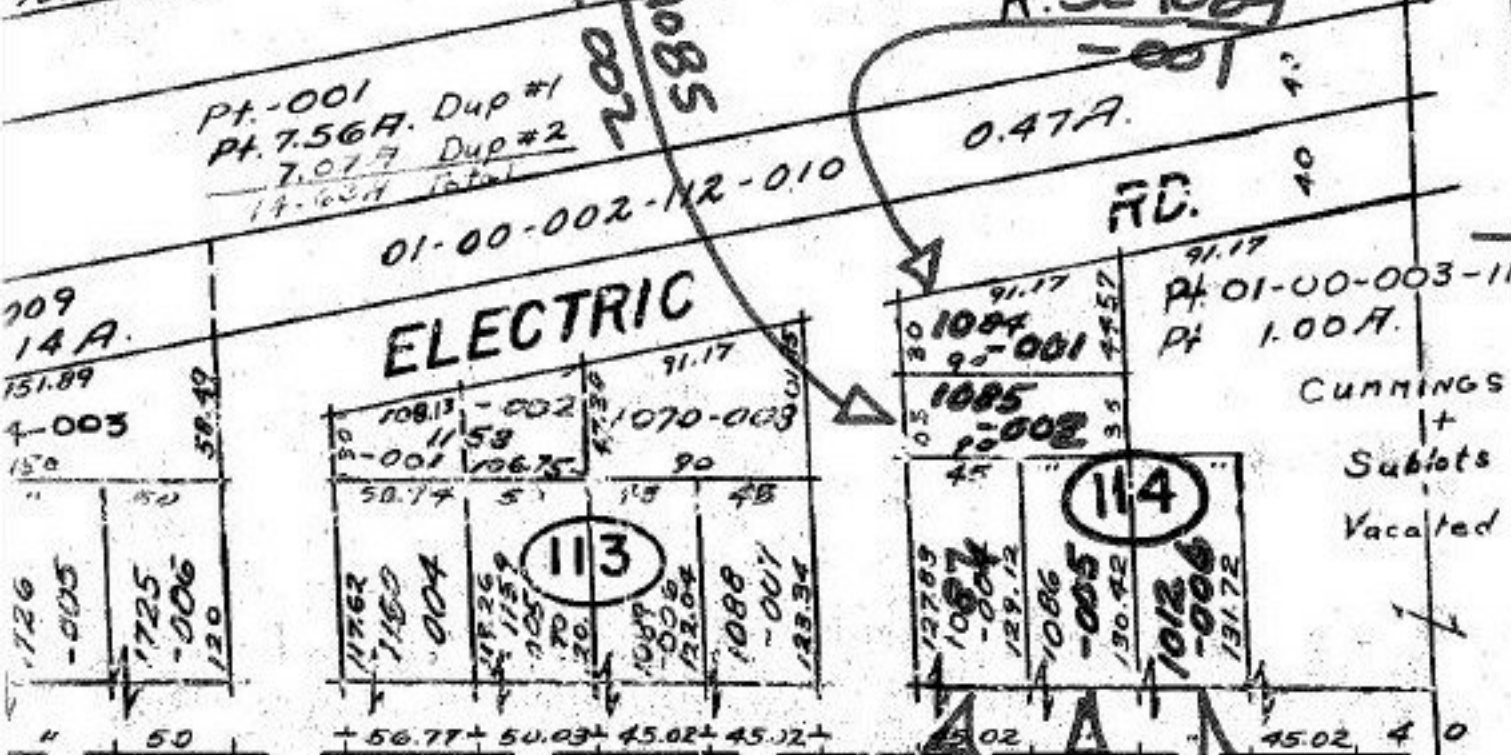


2-056	1144-019	-051	1070	1027	RD. 40
3-057	1145	-052	-022	-055	
4-058	1146-020	-053	1071	1026	
5-059			-068	-056	
6-060	1147-021	-054	1072	1025	
7-061				-057	
8-062	1148-022	-055	1073	1024	
9-063			-073	-058	
0-064	1149-023	-066	1074	1023	
1-065					
2-066	1150-024	-058	1075	1022	
3-067			-027	-059	
4-068	1151-025	-059	1076	1021	
5-069			-028	-060	
6-070	1152-026	-060	1077	1020	
7-071			-029	-061	
8-072	1153-027	-061	1078	1019	
9-073			-030	-062	
0-074	1154-028	-062	1079	1018	
1-075			-031	-063	
2-076	1155-029	-063	1080	1017	
3-077			-032	-074	
4-078	1156-030	-064	1081	1016	
5-079			-033		
6-080	1157-031	-065	1082	1015	
7-081			-034		
8-082	1158-032	-066	90.14	91.17	
9-083			91.17		

PARKLAND

ROXBORO

CUMMINGS



MAP CORR.
ONLY

Cummings Rd.
+
Sublots 1011, 1013 & 1014
Vacated by C.P. # (69059 + 69060)

#16897
9/22/86

APPROVED
LORAIN CO.
MAP DEPT.
DATE 7.28.86
PAGE 1.00.002. B
BY T. McMain
VOID AFTER

LIBERTY AVE.
002-D

SOURCE OF DATA FOR CORR.
SEE ATLAS

SL 1087 -004
SL 1086 -005
SL 1012 -006