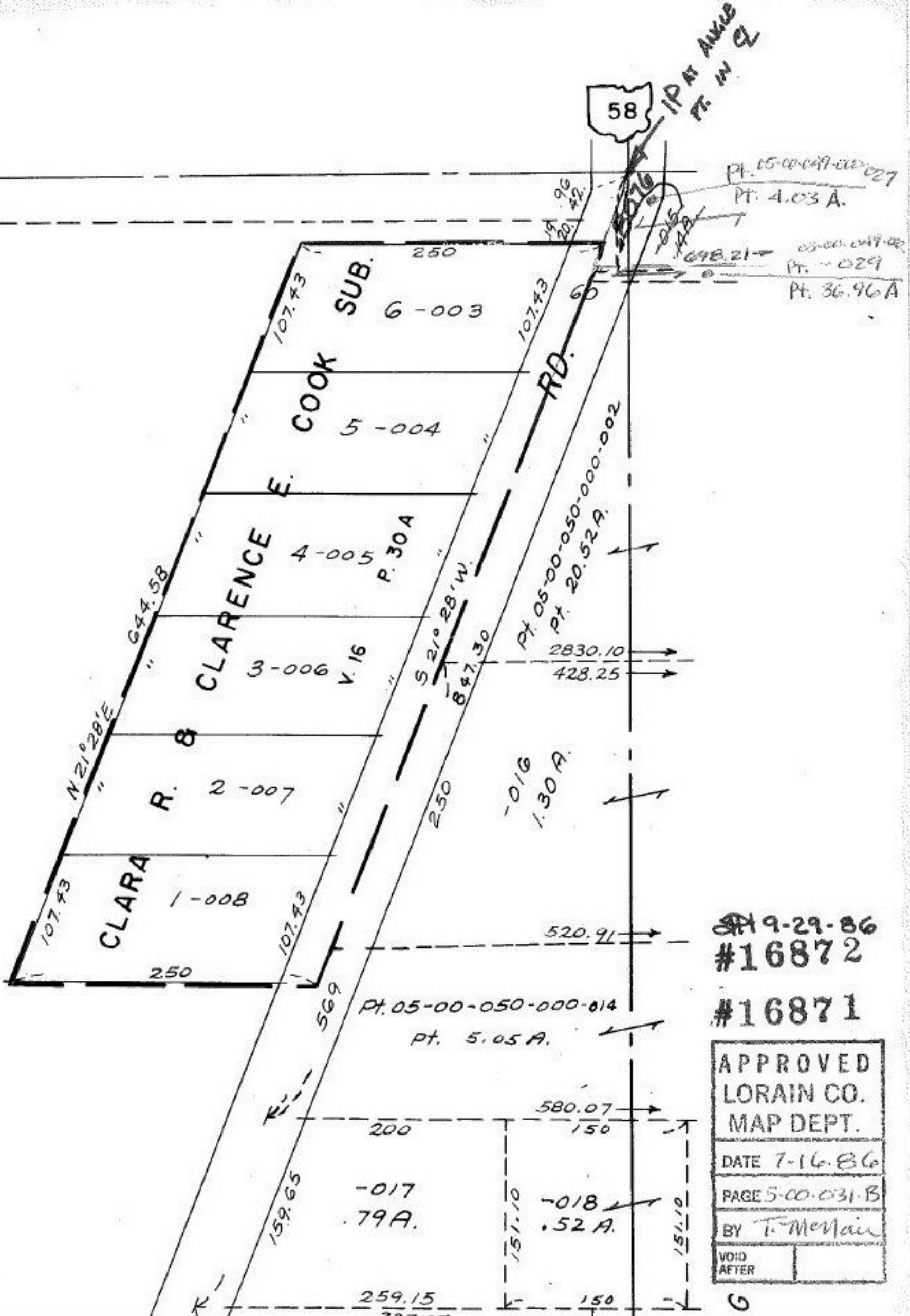


B



IP AT AVULS  
PT. IN CL

Pt. 05-00-049-000-027  
Pt. 4.03 A.  
Pt. 05-00-049-000-029  
Pt. 36.96 A

Pt. 05-00-050-000-002  
Pt. 20.52 A.  
2830.10  
428.25

-016  
1.30 A.

Pt. 05-00-050-000-014  
Pt. 5.05 A.

-017  
79 A.

-018  
.52 A.

9-29-86  
#16872

#16871

APPROVED	
LORAIN CO.	
MAP DEPT.	
DATE 7-16-86	
PAGE 5-00-031-B	
BY T. McMain	
VOID	
AFTER	

G