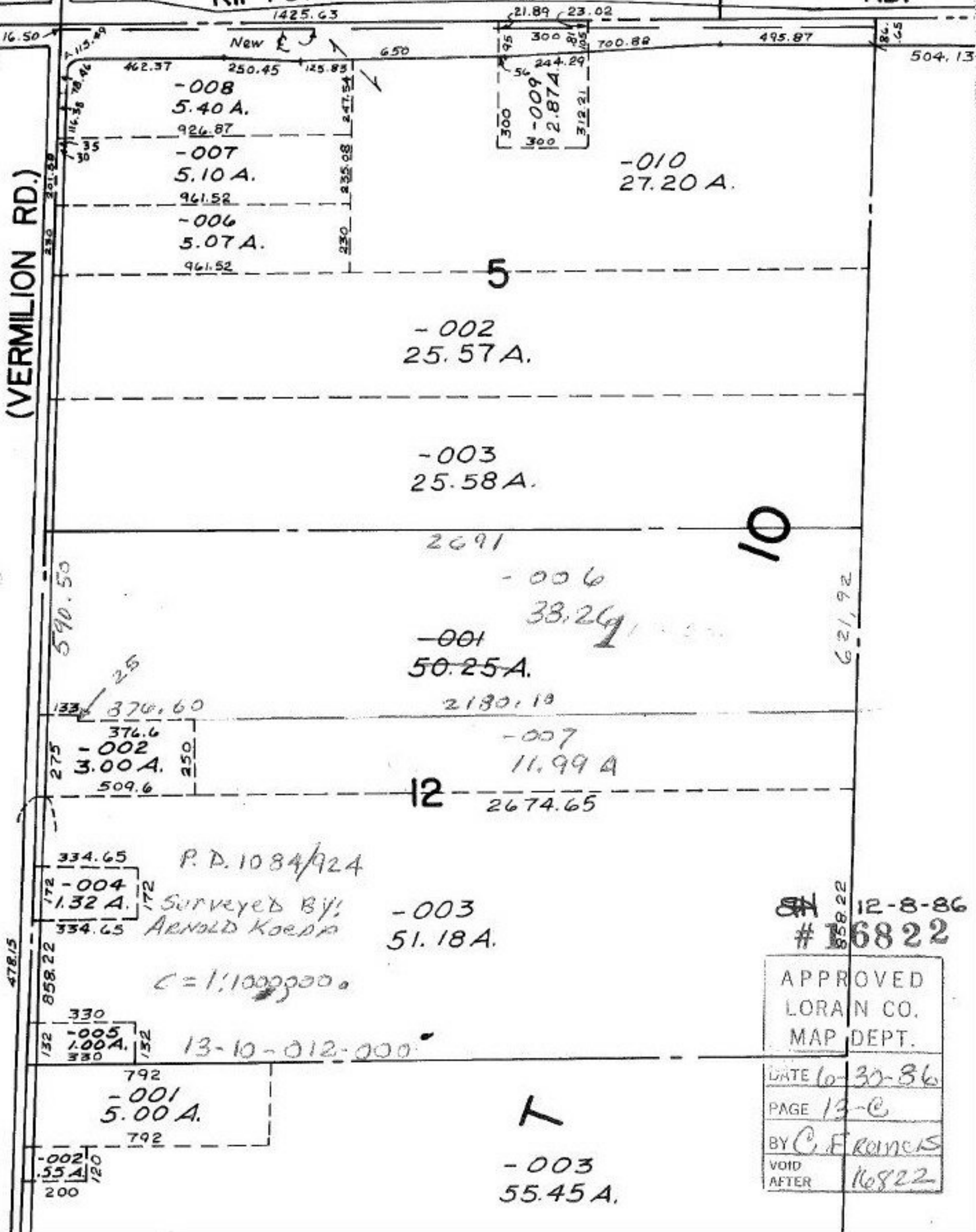


KIPTON - NICKLE - PLATE

RD.

(VERMILION RD.)



-008  
5.40 A.  
926.87

-007  
5.10 A.  
961.52

-006  
5.07 A.  
961.52

-009  
2.87 A.  
312.21

-010  
27.20 A.

-002  
25.57 A.

-003  
25.58 A.

2691

-006  
38.26

-001  
50.25 A.  
2180.19

-007  
11.99 A.  
2674.65

-003  
51.18 A.

-001  
5.00 A.

-002  
5.55 A.

-003  
55.45 A.

P. D. 1084/924

Surveyed By:  
ARNOLD KOEPP

C = 1:100,000

13-10-012-000

12-8-86  
# 6822

APPROVED	
LORAIN CO.	
MAP DEPT.	
DATE	10-30-86
PAGE	13-C
BY	C. F. RAINES
VOID AFTER	116822