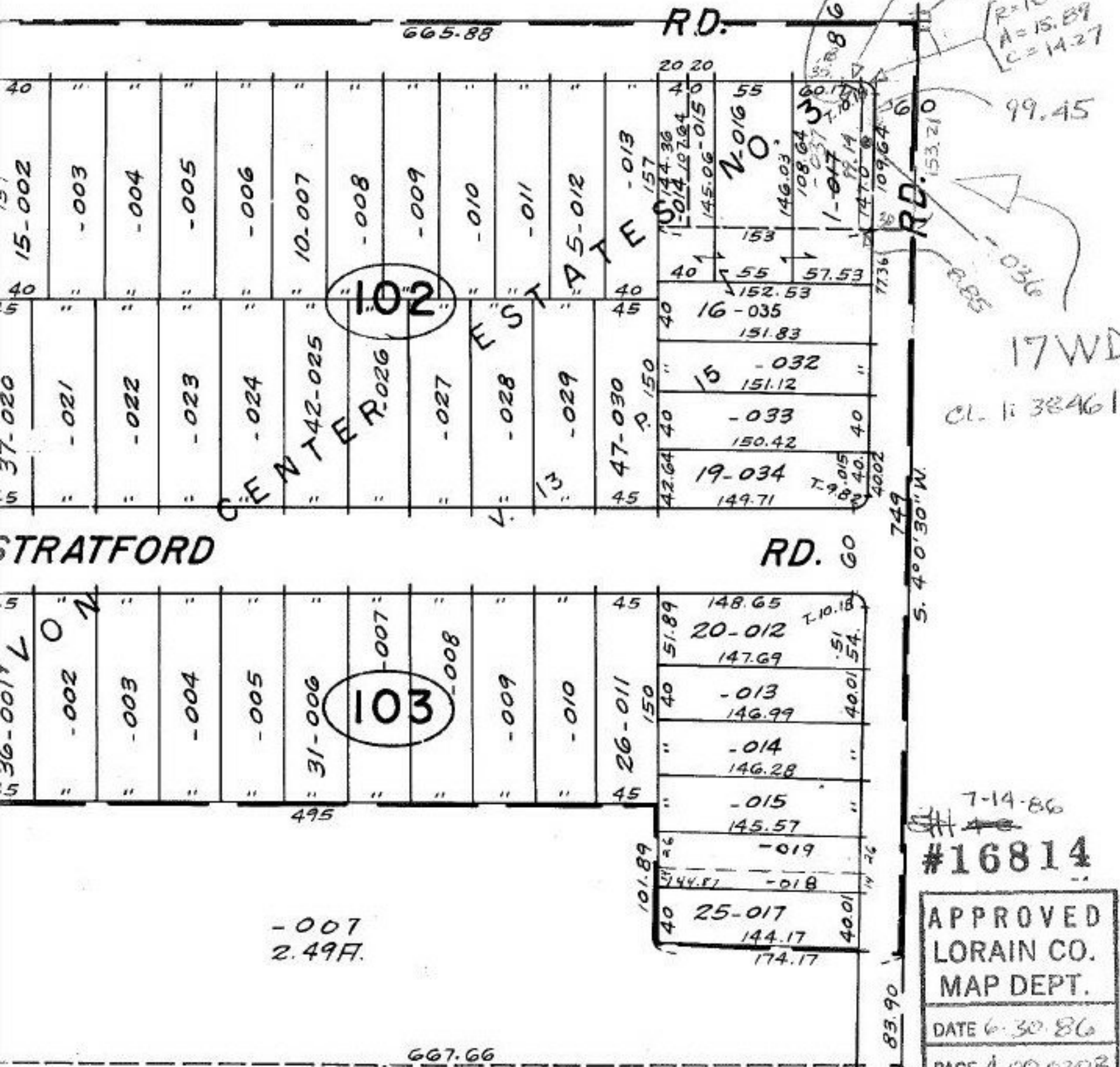


$T = \text{Plan } \frac{A}{2} = 10.18 \cdot T$
 $CP = R \sin \frac{A}{2}$
 $14.27 = 10 \sin \frac{A}{2}$
 $A = 91^\circ 02' 26.9''$

019-J



$R=10$
 $A=15.89$
 $C=14.27$

99.45

17WD

CL. 1: 38461

7-14-86

#16814

APPROVED	
LORAIN CO.	
MAP DEPT.	
DATE 6-30-86	
PAGE 4.00.020B	
BY T. McMain	
VOID	
AFTER	

-007
2.497.

132