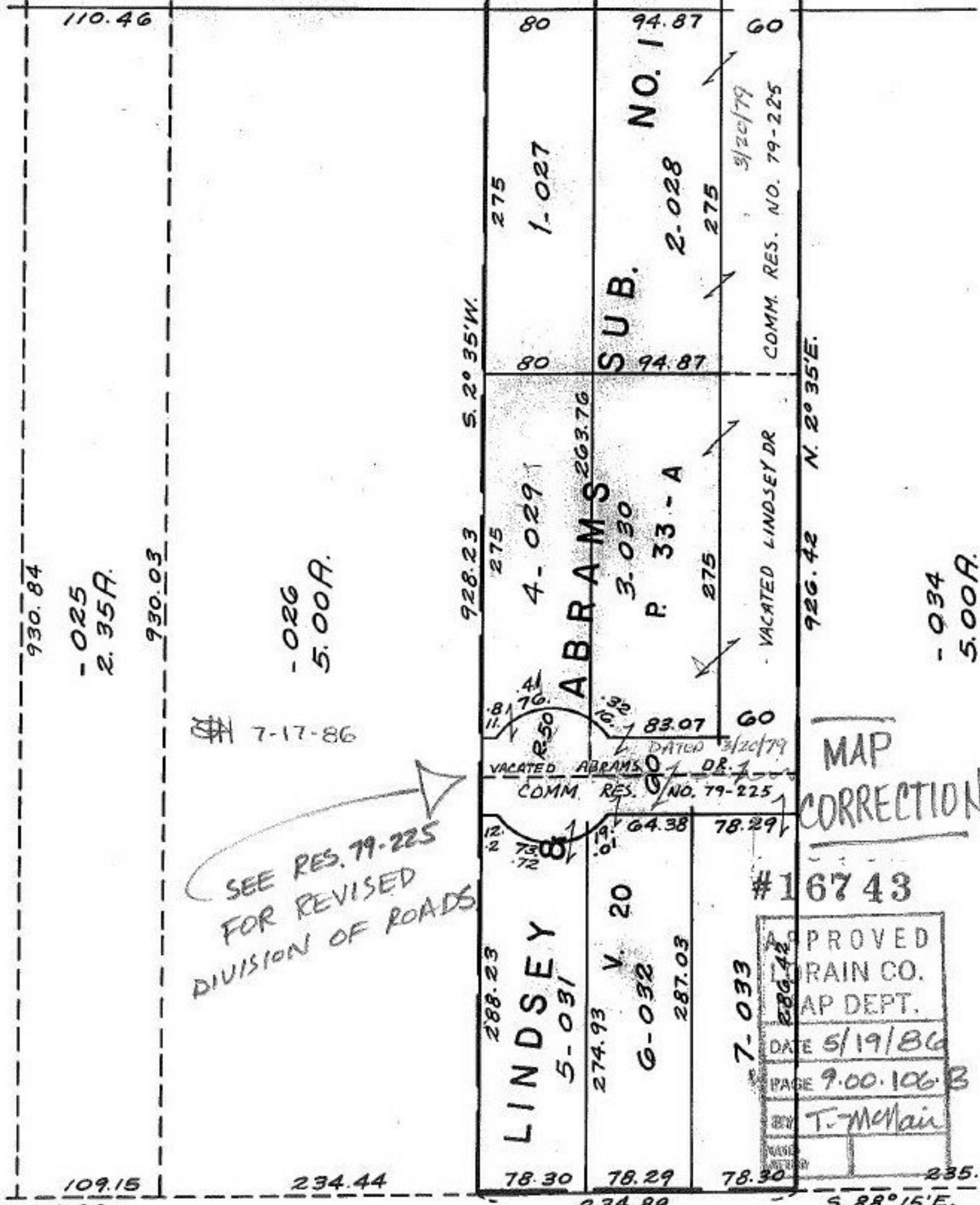


SEE 9-00-096-B

← 220.91 — 0 — N. 87°48'W. HAMILTON — 234.97 — 235



110.46
 930.84
 -025
 2.35A.
 930.03

-026
 5.00A.

928.23 S. 2° 35' W.

80
 275
 1-027
 80
 94.87
 SUB. NO. 1
 2-028
 275
 3/20/79
 COMM. RES. NO. 79-225
 60

928.23 275
 4-029
 ABRAMS
 3-030
 P. 33-A
 275
 VACATED LINDSEY DR
 926.42 N. 2° 35' E.

-034
 5.00A.

7-17-86
 SEE RES. 79-225
 FOR REVISED
 DIVISION OF ROADS

83.07 60
 DATED 3/20/79
 VACATED ABRAMS DR.
 COMM. RES. NO. 79-225

MAP
 CORRECTION

288.23
 LINDSEY
 5-031
 274.93 V. 20
 6-032
 287.03
 78.30 78.29 78.30
 234.89

#16743
 APPROVED
 DRAIN CO.
 MAP DEPT.
 DATE 5/19/86
 PAGE 9.00.106-B
 BY T. McMain

106-A

109.15 2423.90 234.44 234.89 235.00 S. 88°15'E.