

SEE

8.32 A.

105

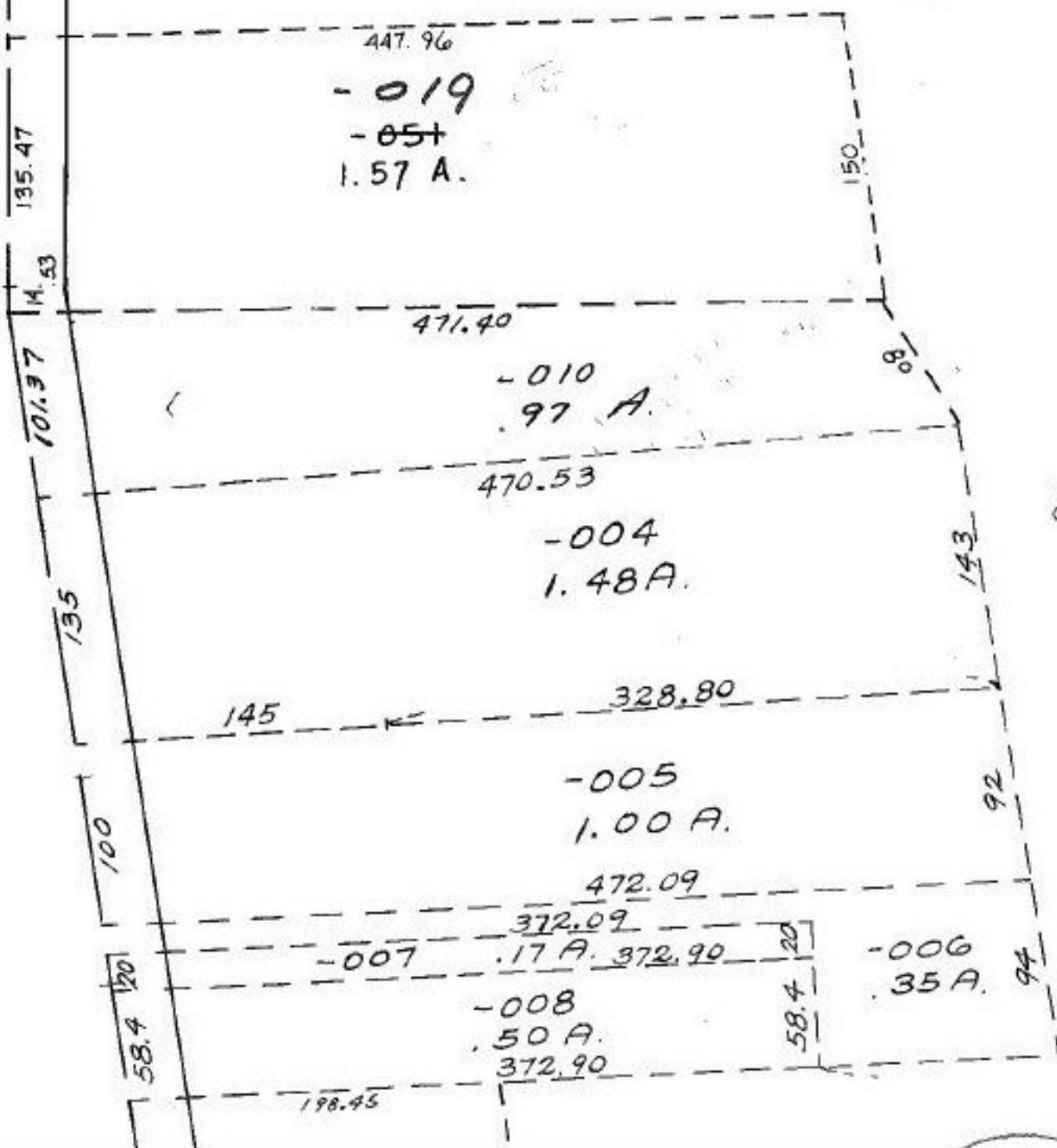
307.25

P.P. No. Correction^{1195.3}_{9/3.44}
- only -



Because of split ~~map~~ No. 15563
Parcel 05-00-094-103-051 - SHOULD
have been in Block 105

Pt. 05-00-094-103
Pt. 23.63 A



~~7-16-86~~

#16736

APPROVED
LORAIN CO.
MAP DEPT.
DATE 5-15-86
PAGE 5-00-094-C
BY C. FRANCIS
VOID AFTER 16736